

COMPLETE SETUP AND PROGRAMMING MANUAL FOR XTIP/XTXIP/XTOIP PANELS



A Videofied CMA/XMB/XMA Alphanumeric Keypad or Frontel TMT2 is required for programming and maintenance



CMA



XMB/XMA

Table of Contents

	Page
FCC _____	3
Installation Guidelines _____	4
Introduction _____	5
Initial Programming _____	6-16
Device Installation _____	17
Disabling Monitoring _____	18
Entering Badges and Access Codes _____	19-20
Choosing Siren Options _____	20
Ethernet Parameters and Testing _____	21
Testing GPRS Level and Error Codes List _____	22
Enabling External RF Antenna _____	23
Testing Device RF Level _____	24
Connecting a GPRS Antenna _____	25
XTIP Power Chart _____	25
Arming Input Wiring Diagram _____	26
Testing to Central Station _____	27
Mounting XT/XTX _____	28
Mounting XTO _____	28-29
Programmable Input Configuration _____	30-32
Programmable Output Configuration _____	33-35
Configuring Scheduling _____	36-38
Troubleshooting _____	39-41
After Initial Programming Flow Chart _____	42-43
Addendum _____	44-45

Regulatory Information for USA and Canada

FCC Part 15.21 *Changes or modifications made to this equipment not expressly approved by RSI Video Technologies may void the FCC authorization to operate this equipment.*

FCC Part 15.105 Class B

This equipment has been tested and found to comply with the limits for a Class B digital device, pursuant to Part 15 of the FCC Rules. These limits are designed to provide reasonable protection against harmful interference in a residential installation. This equipment generates uses and can radiate radio frequency energy and, if not installed and used in accordance with the instructions, may cause harmful interference to radio communications. However, there is no guarantee that interference will not occur in a particular installation. If this equipment does cause harmful interference to radio or television reception, which can be determined by turning the equipment off and on, the user is encouraged to try to correct the interference by one or more of the following measures:

- *Reorient or relocate the receiving antenna.*
- *Increase the separation between the equipment and receiver.*
- *Connect the equipment into an outlet on a circuit different from that to which the receiver is connected.*
- *Consult the dealer or an experienced radio/TV technician for help.*

Radiofrequency radiation exposure information according 2.1091 / 2.1093 / OET bulletin 65

This equipment complies with FCC radiation exposure limits set forth for an uncontrolled environment. This equipment should be installed and operated with minimum distance of 20 cm between the radiator and your body.

This transmitter must not be co-located or operating in conjunction with any other antenna or transmitter.

This device complies with Part 15 of the FCC Rules and with RSS-210 of Industry Canada.

Operation is subject to the following two conditions:

- (1) this device may not cause harmful interference, and*
- (2) this device must accept any interference received, including interference that may cause undesired operation.*

Basic Setup Guidelines for Installation and Programming

Pre-Setup

- 1) Obtain the account number from the Central Station.
- 2) If using Cellular communication for primary or backup, activate the SIM card through your cellular provider
 - a. **Do these steps at least 1 day before the install.*

System Programming and Setup

- 1) Setup and program the system in the office or in your vehicle. **DO NOT MOUNT THE DEVICES.** (Pages 6-16)
- 2) Disable monitoring so that signals are not sent until you are ready to send them. (Page 18)
- 3) Add user codes and or badges after initial programming. (Pages 19-20)
- 4) Silence the siren before arming for testing (If siren is present). (Page 20)

Deploying the System on Site

- 1) Place the panel where you want to mount it and run the Ethernet cable. In Maintenance run the ETH. STATUS test to make sure you are receiving an IP. If you are using cellular as backup or primary make sure you get 3/5 or better when running the GPRS Level Test in maintenance. If not, you will need to move the panel and run the test again.* (Page 22)
- 2) Deploying Devices: Use your keypad to run the RF test for each device. If you get a 9/9 for your RF test on the first device, then mount it. If not, you will need to move the device to get optimal signal.* (Page 24)
 - a. If you are not getting an appropriate GPRS or RF level, you can add an external antenna for either signal. (Not available for the XL600) Enabling External Antenna: (Page 23)
- 3) Re-enable monitoring before you send signals (Page 20)
 - a. If you are currently using TMT Installer to program the system you can now take still pictures from each MotionViewer using the software. See TMT Installer Users Manual available on <http://support.videofied.com>
- 4) Once you have everything mounted, arm the system and trip one MotionViewer at a time. Make sure you stand in front of each MotionViewer for 10 seconds so the central station has some video to look at. (Page 27)
- 5) After you have sent signals to central station, call to verify.

The following pages will go through each one of these steps and, if you have any issues please consult the troubleshooting section Pages 39-41. If you still cannot resolve the issue, please feel free to call technical support through live support chat and ticket submission at support.videofied.com.

Sleeping mode and Wake-up on the CMA:

They keypad backlight will go out after 30 seconds of inactivity. When you press a button the keypad wakes up. The first touch on the pad that wakes it up will not be a registered command and will only wake up the keypad.

Sleeping mode and wake-up on the XMA/XMB:

The keypad backlight will go out after 30 seconds of inactivity. The first touch on the keypad will wake up the keypad and will register as a command to the control panel.

Introduction:

Description:

The XTIP control panel is a Videofied wireless, battery operated hybrid alarm system. It is designed for residential, small business and commercial security applications. The XTIP provides integrated Video Verification and features dual communication paths: Ethernet and GPRS.

The XTIP has programmable inputs and outputs. XTIP also features mapping where an external input can be used to generate a video clip from a MotionViewer.

Internal RF range and GPRS range can be enhanced using external antennas.

Supervised Wireless Technology:

The XTIP, along with all Videofied devices, uses the patented S2View® - Spread Spectrum, Videofied, Interactive, AES Encrypted Wireless technology, providing optimum signal integrity and security.

The bi-directional RF communication path between all devices and the system control panel guarantees high signal reliability. Integrated antennas eliminate protruding wires or rods, which are difficult to install, unsightly to consumers and potentially troublesome if damaged.

The panel supervises every device (excluding the remote key fob) to validate current open/close state, tamper condition, serial number, date of manufacture, firmware revision, and battery status.

In order for an installation to be UL compliant you must follow the specifications in the table below:

Type	Specifications	Location In Manual
Audio	When a MotionViewer is installed on the system you may not have the siren sound for less than 60 seconds	Page 43
Audio	If no MotionViewer is installed on the system you may not have the siren sound for less than 240 seconds	Page 43
Delays	When a MotionViewer is installed on the system the Entry delay must be 45 seconds	Page 9

SETUP MANUAL FOR XTIP SERIES GPRS PANEL

THIS SYSTEM REQUIRES A CMA/XMB/XMA or TMT2 INSTALLER SOFTWARE FOR PROGRAMMING

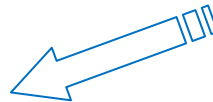
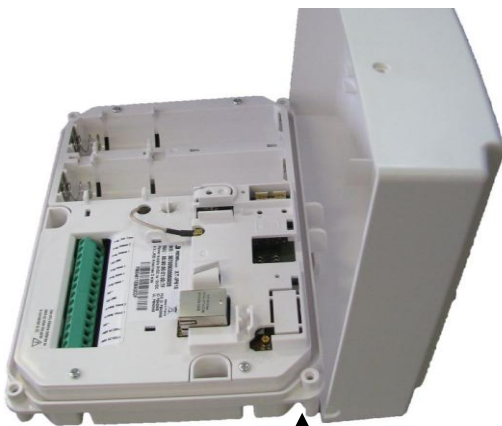
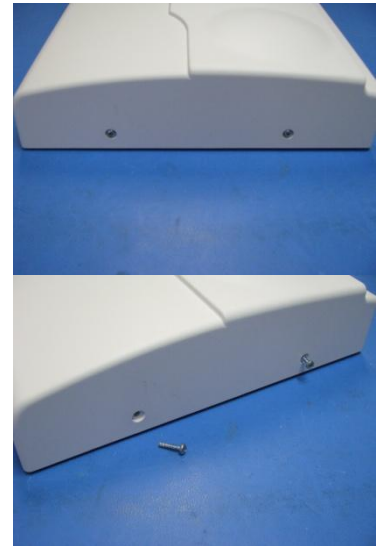
****TO TRANSMIT ALARMS AND VIDEO VIA ETHERNET, THE SYSTEM REQUIRES AN EXTERNAL POWER SUPPLY WITH 4 ALKALINE BATTERIES FOR BACK-UP (PP4)****

XT Initial Programming



Open the Control Panel

Using a #1 Phillips screwdriver, remove the 2 screws holding the cover on.

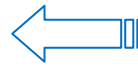
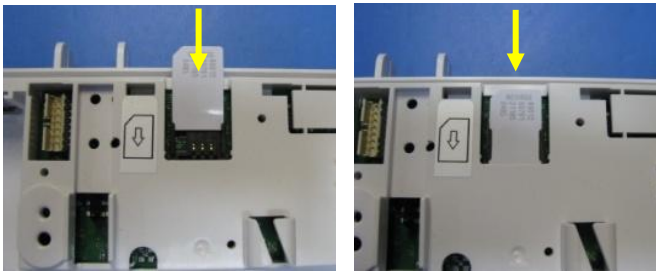


The cover will fold off the panel like a book with the curved side acting like the binding. The same technique is used when placing the cover back onto the unit.



When removing the XTO cover, pull straight off, do not slide it.

*The SIM card must **NOT** be inserted or removed while the panel is powered*

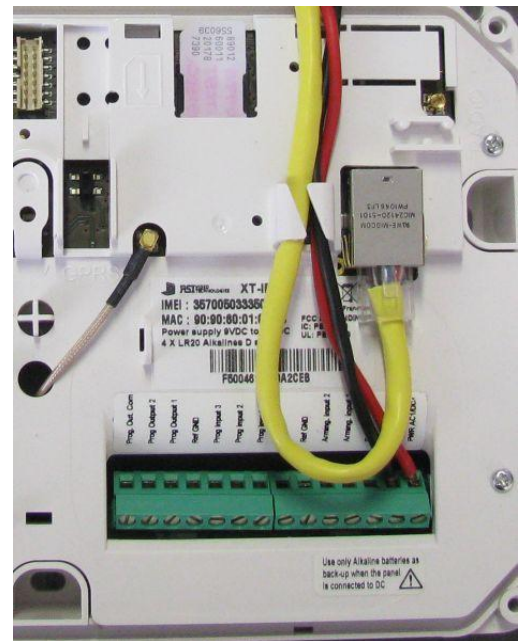


Install the SIM card

Slide SIM card into the slot. Make sure it is aligned correctly. The SIM card is not required if you plan to use Ethernet only.

Connect the RJ45 (Ethernet cable) to the panel

Plug the RJ45 cable into the Ethernet jack on the control panel. The cable can be routed back through the wire channel to make sure it does not get pinched.



Important:

When the panel attempts a transmission via Ethernet a red LED will flash.



Obtaining XMB/XMA Keypad Special Characters

Keys	1 st Press	2 nd Press	3 rd Press	4 th Press	5 th Press	6 th Press	7 th Press	8 th Press	9 th Press	10 th Press	11 th Press	12 th Press	13 th Press	14 th Press
1	'Space'	1	.	_	@	\$,	'	?	!	;	:	"	N/A
0	+	0	-	*	#	=	/	%	&	¥	<	>	()

Obtaining CMA Keypad Special Characters

Key	1 st press	2 nd press	3 rd press	4 th press	5 th press	6 th press	7 th press	8 th press	9 th press	10 th press	11 th press
1	"space"	.	.	'	?	!	:	:	#	1	
0	-	+	=	/	¥	_	<	>	()	0
@	@	\$	%	&	*	#					

Powering the Panel

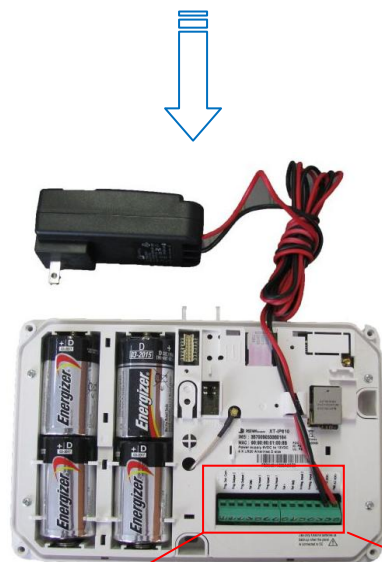
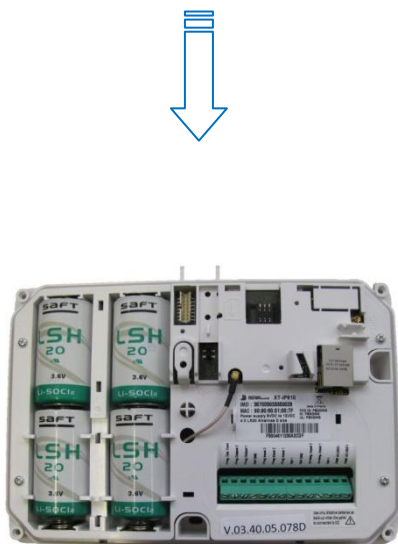
****THE CONTROL PANEL MUST BE CONNECTED TO AN EXTERNAL POWER SUPPLY WHEN ETHERNET FEATURE IS ACTIVE****

Option 1: PP1	Option 2
4 x LSH20 SAFT Lithium D-Cell	4 x E95VP Alkaline D-Cell + 12v 2amp DC Class 2 power supply (not supplied)
Used for Standalone or Xtender mode without Programmable Inputs, Programmable Outputs, Ethernet, or SMS	Used for Standalone or Xtender mode where Programmable Inputs/Mapping, Programmable Outputs, Ethernet connection, or SMS will be used
LSH20 Specifications: Operating Temp: -76°F to +230°F Storage Temp: Dry, Ventilated, 86°F Max	E95VP Specifications: Operating Temp: 0°F to 130°F

LSH20 Technical Specifications	
Nominal Voltage	3.6 V
Open Circuit Voltage	3.67 V
Nominal Capacity	9.3 Ah

E95VP Technical Specifications	
Nominal Capacity	8900 mA hours
Nominal Voltage	1.5 V

Power Supply Requirements	
Output Voltage (volts)	12
Output Current (mA)	2000
Certifications	Class 2 (For UL Compliance)



WARNINGS:

1. DO NOT USE ALKALINE BATTERIES IF INSTALLING AN XTXIP/XTOIP GPRS BELOW 30° F, YOU MUST USE OPTION 1: PP1.
2. DO NOT INSTALL A TRANSFORMER WHEN USING OPTION 1 (LITHIUM BATTERIES).

XTIP Programming

Reset the XTIP Panel:

Press and hold programming button (P) for 10sec until the Indicator LED blinks twice



Press and instantly release the programming button (P). The indicator LED will blink once. The panel is now in 'Learn Mode' for the CMA601/XMB611/XMA611 keypad.



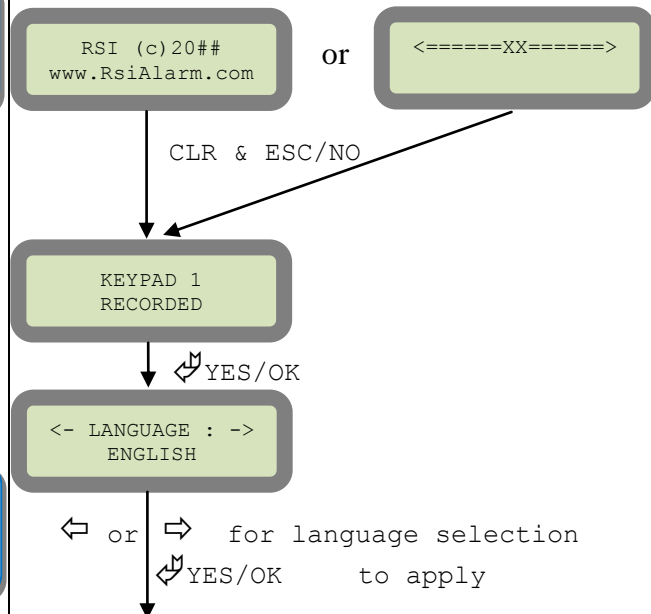
Insert all three batteries into the CMA/XMB/XMA and press both the ESC/NO and CLR keys at the same time and release. The indicator LED on the keypad will blink rapidly.

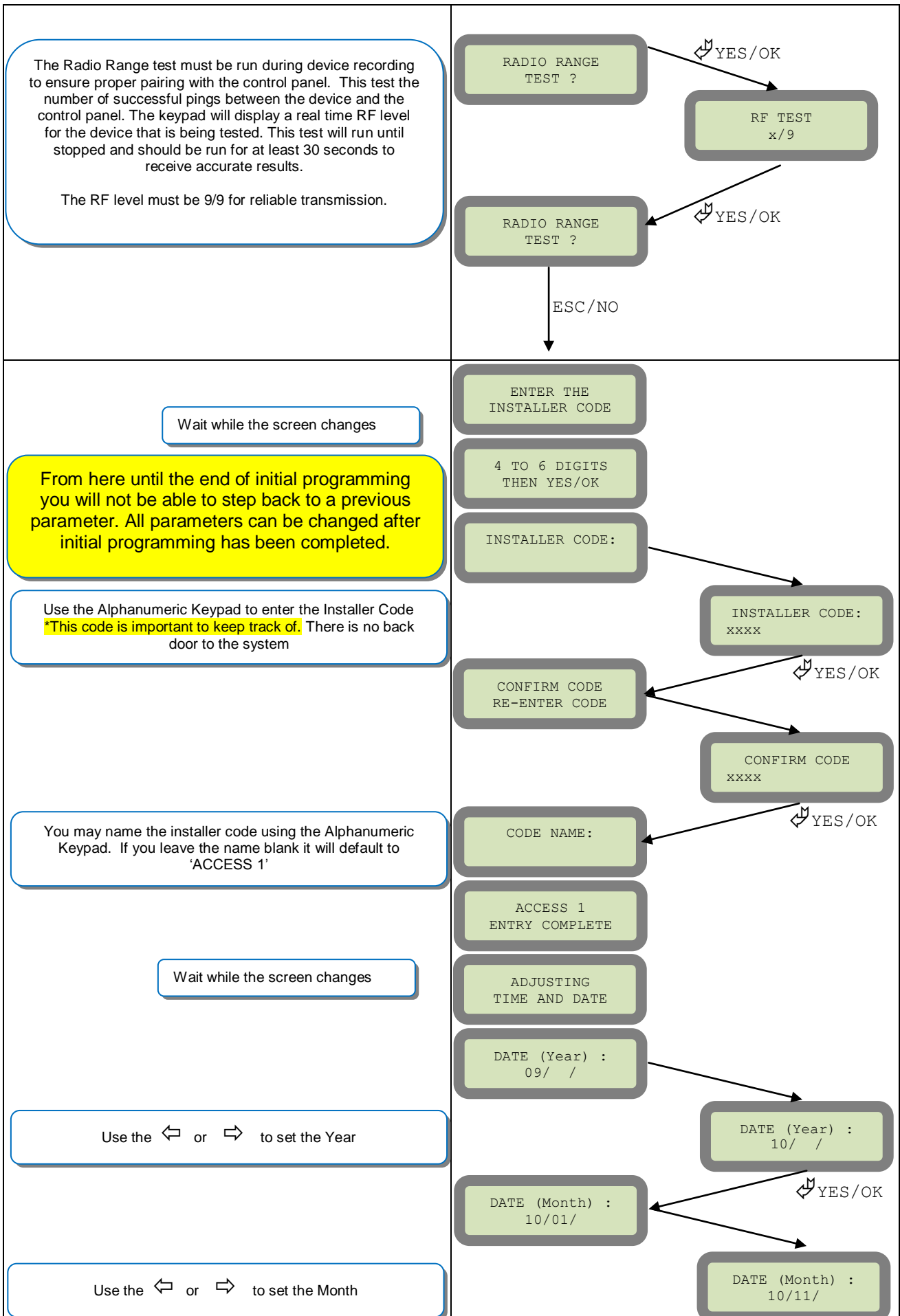


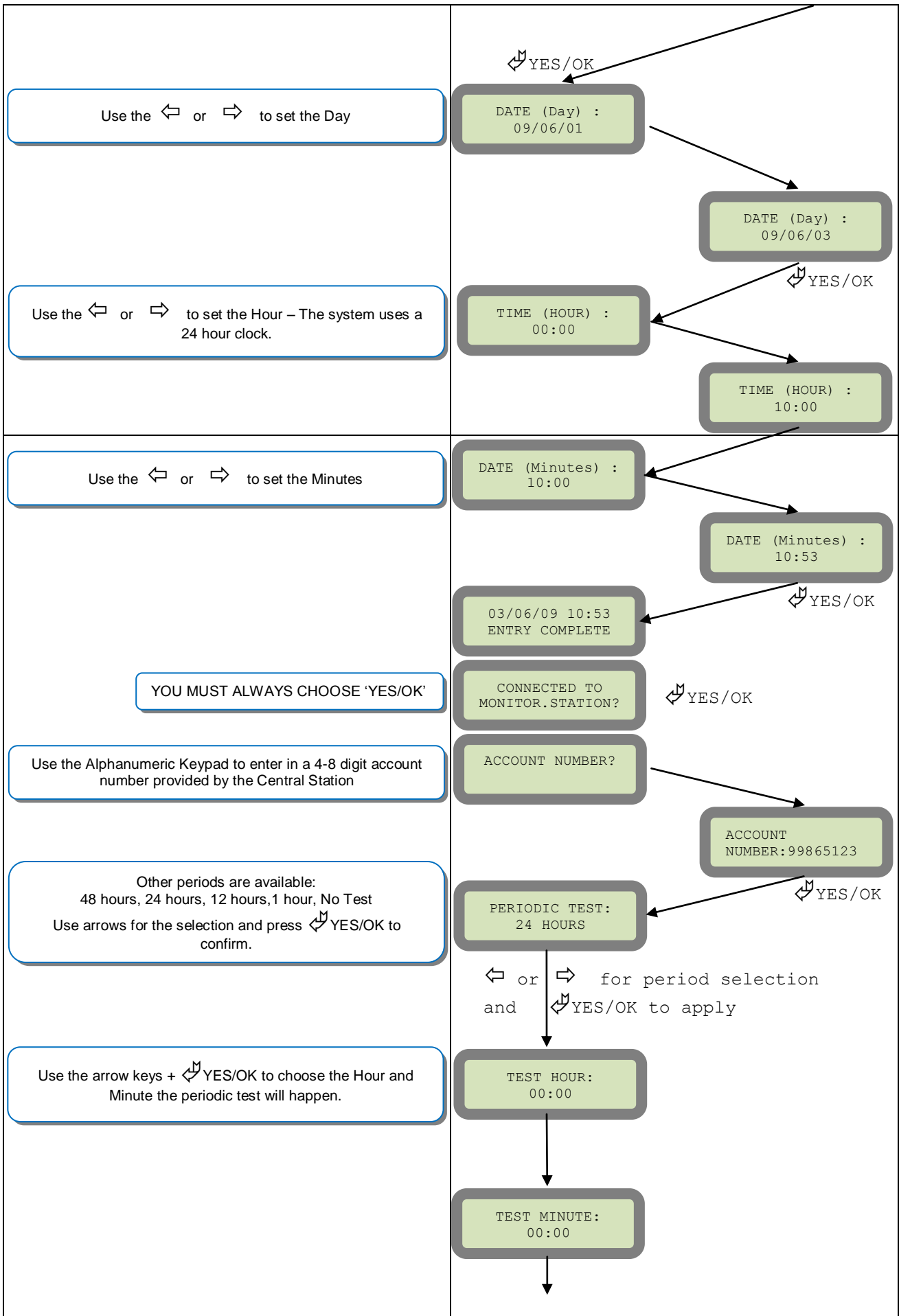
Other languages are available by scrolling with arrows. ITALIANO, NEDERLANDS, DEUTSCH, CASTELLANO, SVENSKA, PORTUGUES, FRANCAIS Press YES/OK for the selected one.

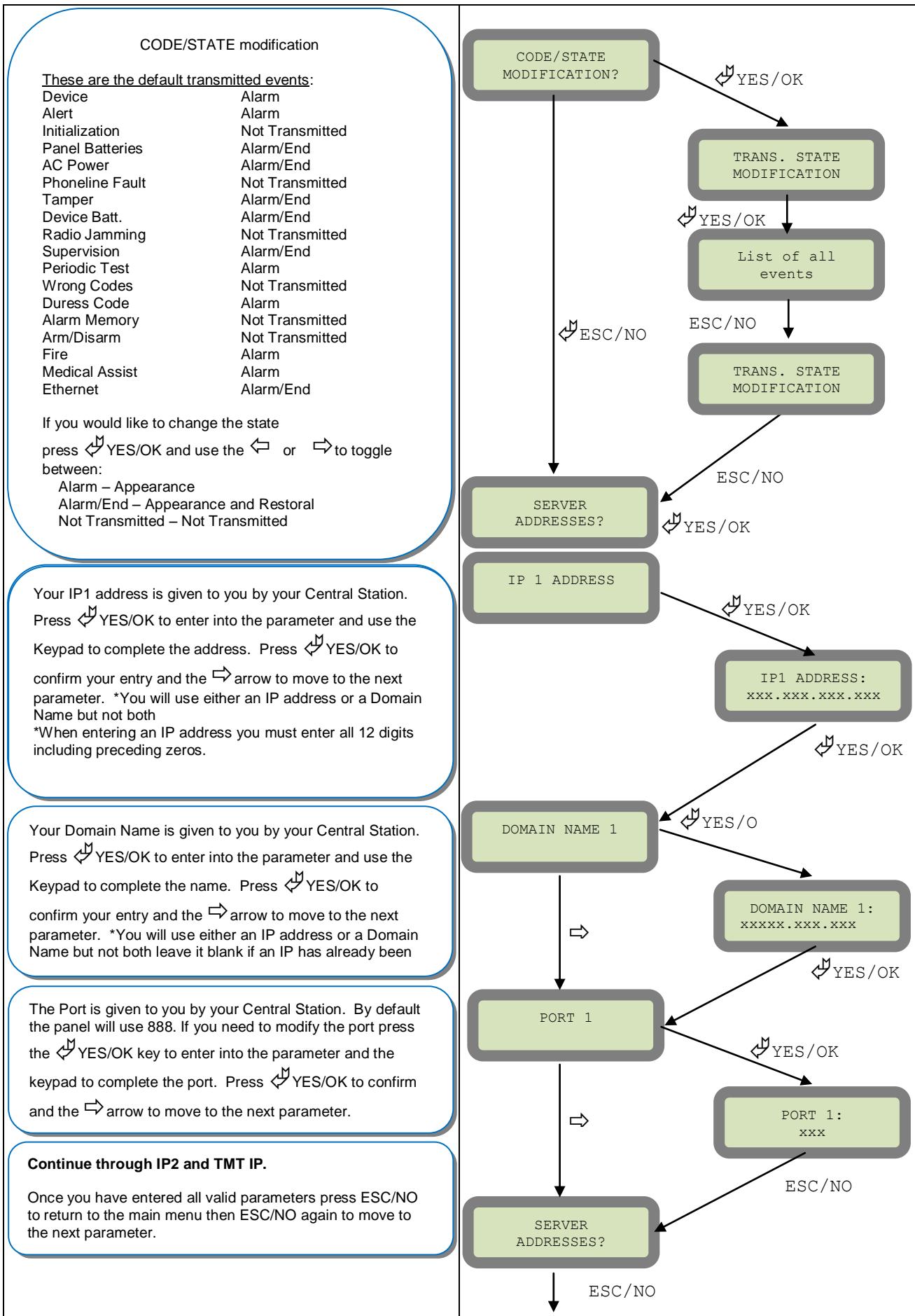
*Note: If you are having issues pairing the keypad to the panel, please refer to the troubleshooting section.

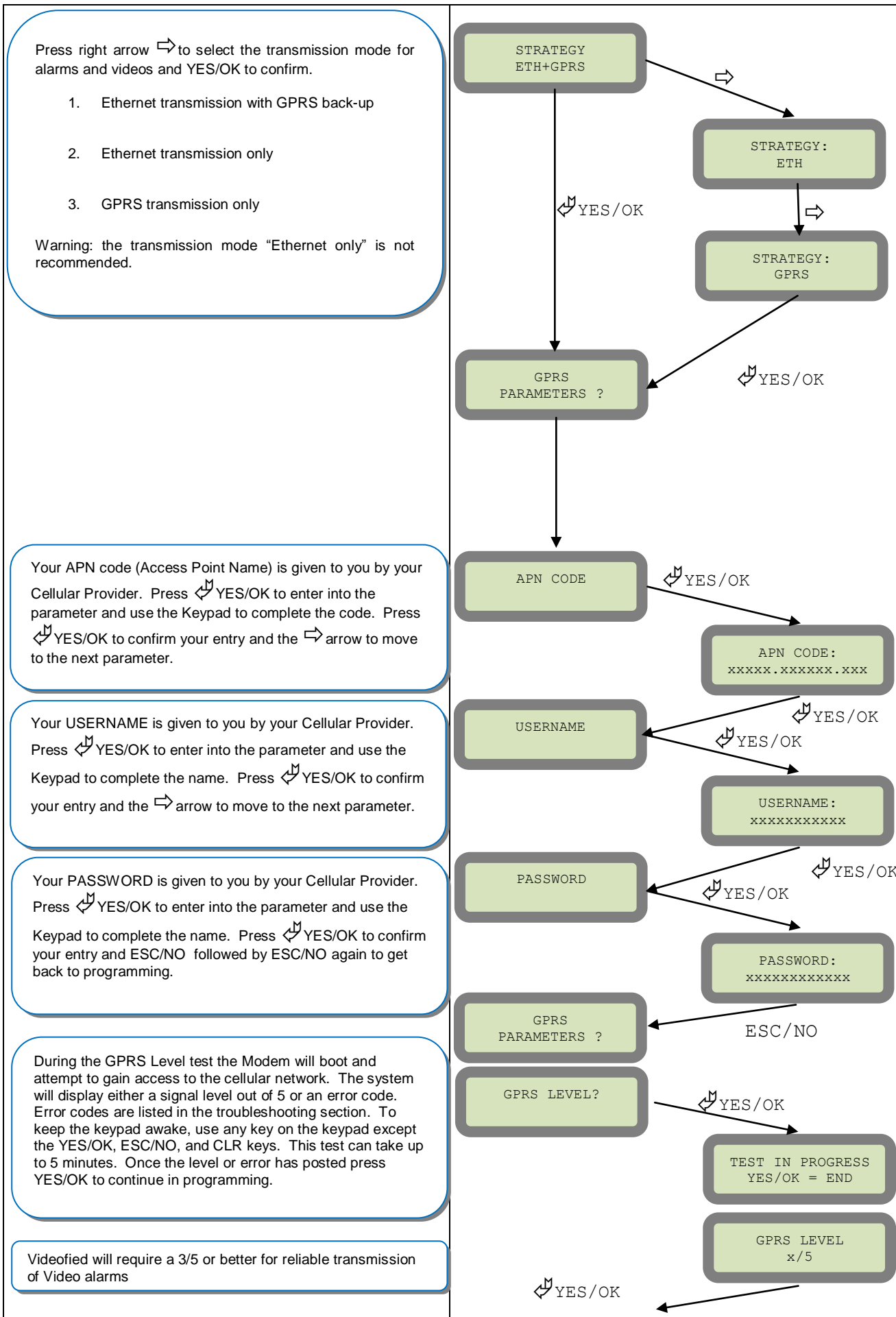
Programming Device/Keypad

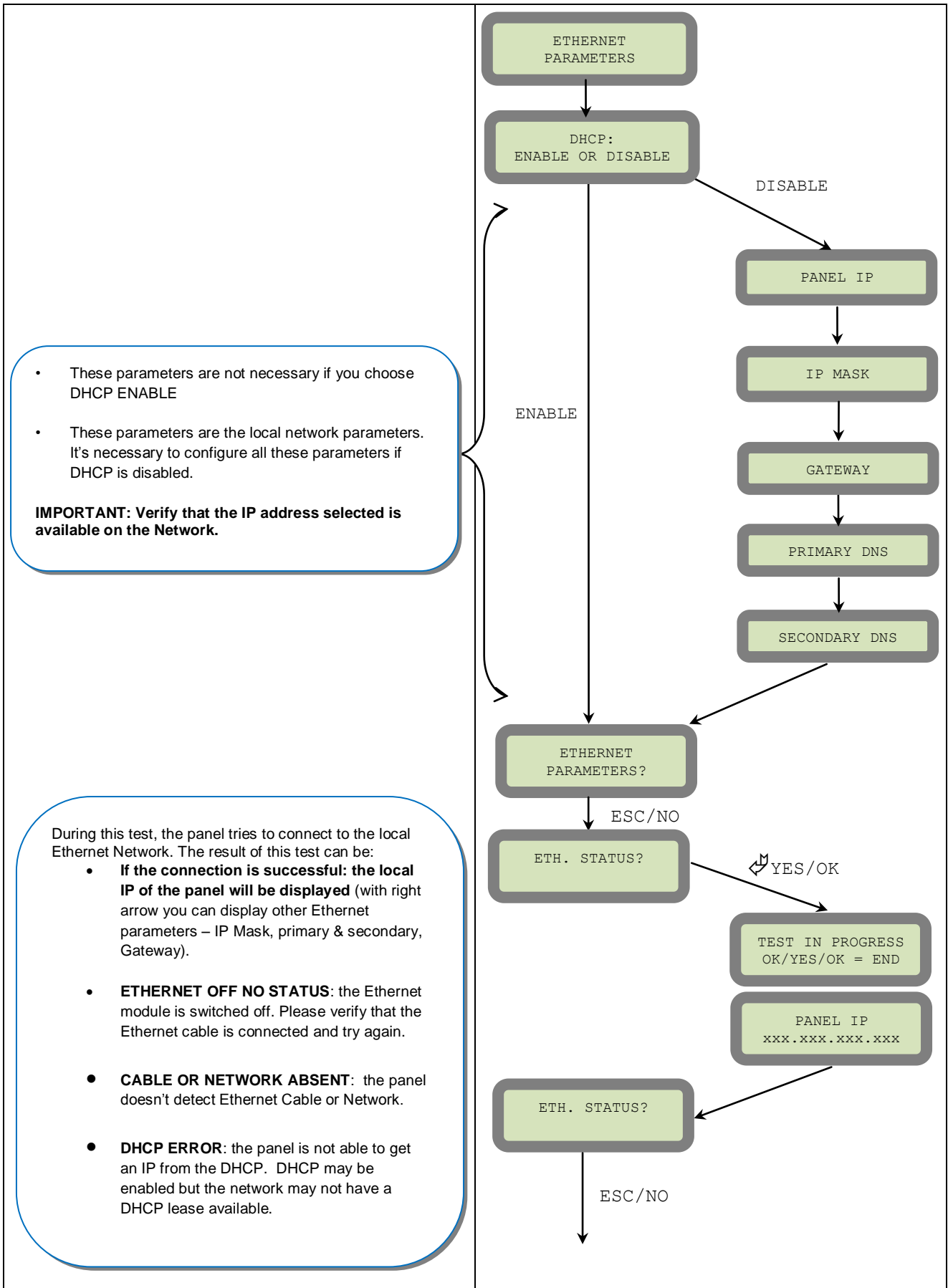


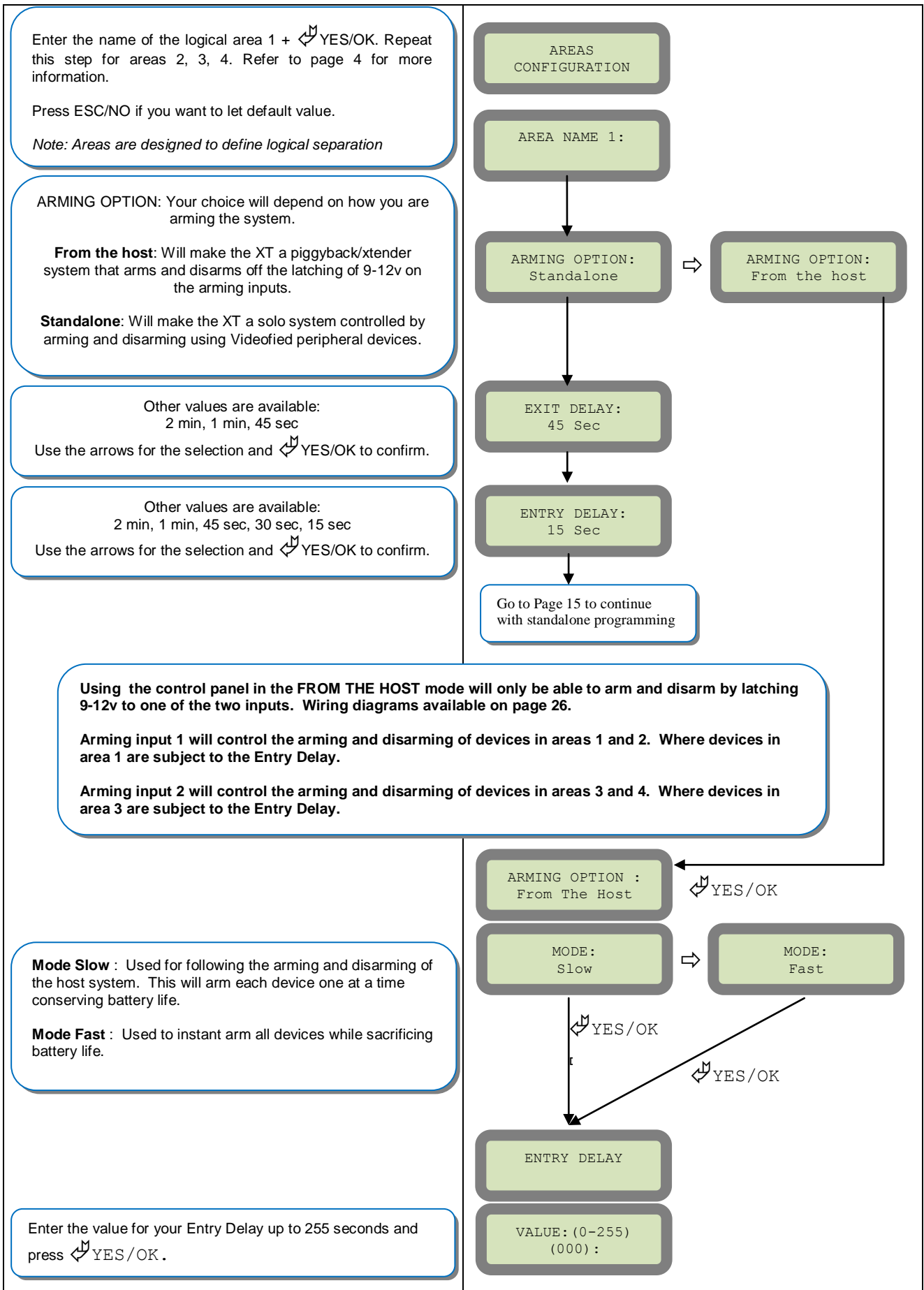












Enter the name of the logical area 1 + YES/OK. Repeat this step for areas 2, 3, 4. Refer to page 4 for more information.

Press ESC/NO if you want to let default value.

Note: Areas are designed to define logical separation

ARMING OPTION: Your choice will depend on how you are arming the system.

From the host: Will make the XT a piggyback/xtender system that arms and disarms off the latching of 9-12v on the arming inputs.

Standalone: Will make the XT a solo system controlled by arming and disarming using Videofied peripheral devices.

Other values are available:
2 min, 1 min, 45 sec
Use the arrows for the selection and YES/OK to confirm.

Other values are available:
2 min, 1 min, 45 sec, 30 sec, 15 sec
Use the arrows for the selection and YES/OK to confirm.

Using the control panel in the FROM THE HOST mode will only be able to arm and disarm by latching 9-12v to one of the two inputs. Wiring diagrams available on page 26.

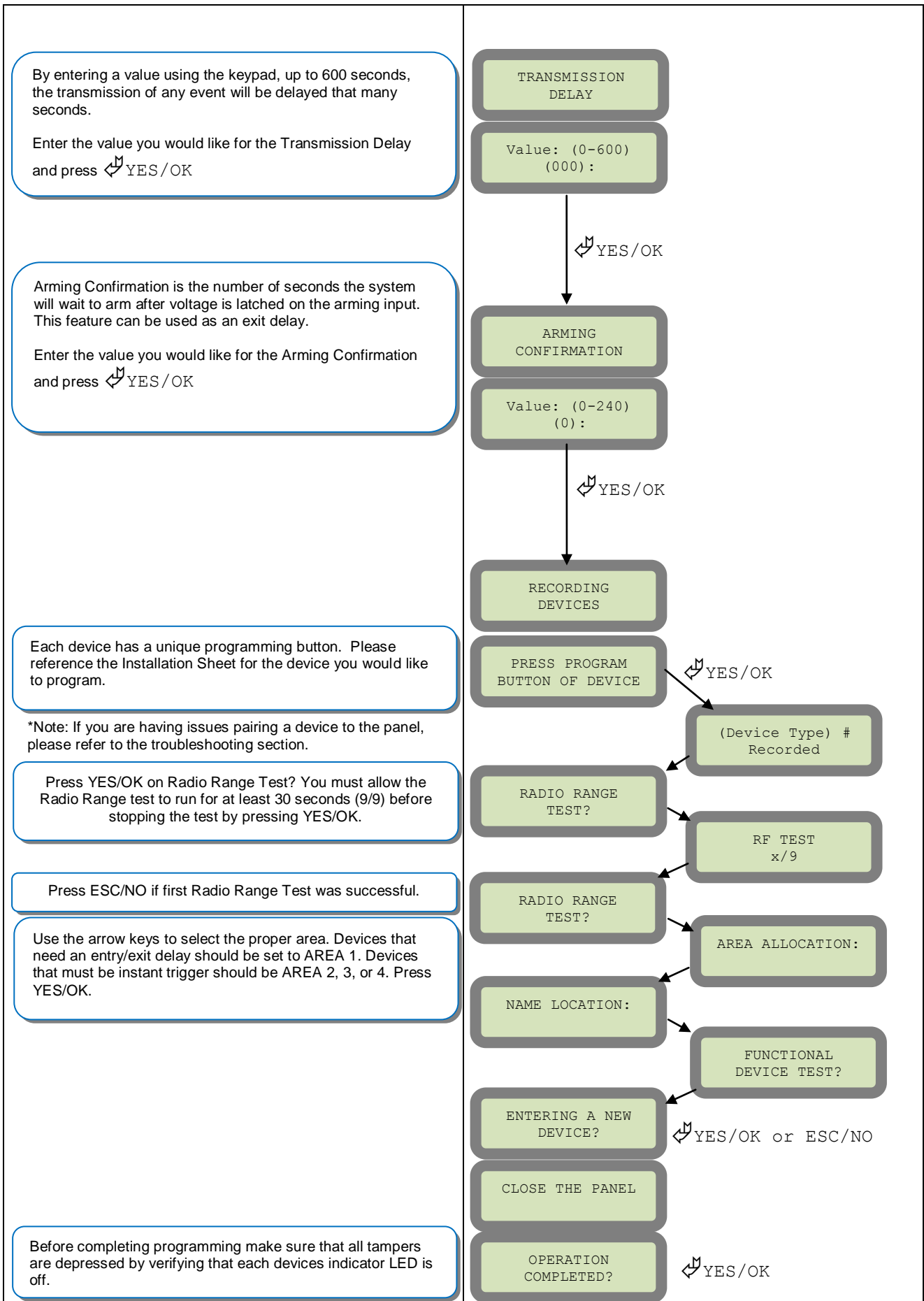
Arming input 1 will control the arming and disarming of devices in areas 1 and 2. Where devices in area 1 are subject to the Entry Delay.

Arming input 2 will control the arming and disarming of devices in areas 3 and 4. Where devices in area 3 are subject to the Entry Delay.

Mode Slow : Used for following the arming and disarming of the host system. This will arm each device one at a time conserving battery life.

Mode Fast : Used to instant arm all devices while sacrificing battery life.

Enter the value for your Entry Delay up to 255 seconds and press YES/OK .



Device Installation

DCV651 – Outdoor MotionViewer / BR651 Outdoor Badge Reader

Place batteries in Device. Wait for LED to turn on. Press and release the programming button.



DCV601 – Indoor MotionViewer / ITR601 – Indoor Blind PIR

Place batteries in device. Wait for LED to turn on behind PIR lens. Press and release the programming button.



DCV601



ITR601

CT601 – Door/Window Contact

Place battery into the door/window contact. Wait for LED to turn on. Press and release the programming button.



RC601 – Remote Control Fob

Press and hold the ON and OFF keys at the same time for 5 counts of Mississippi and release.



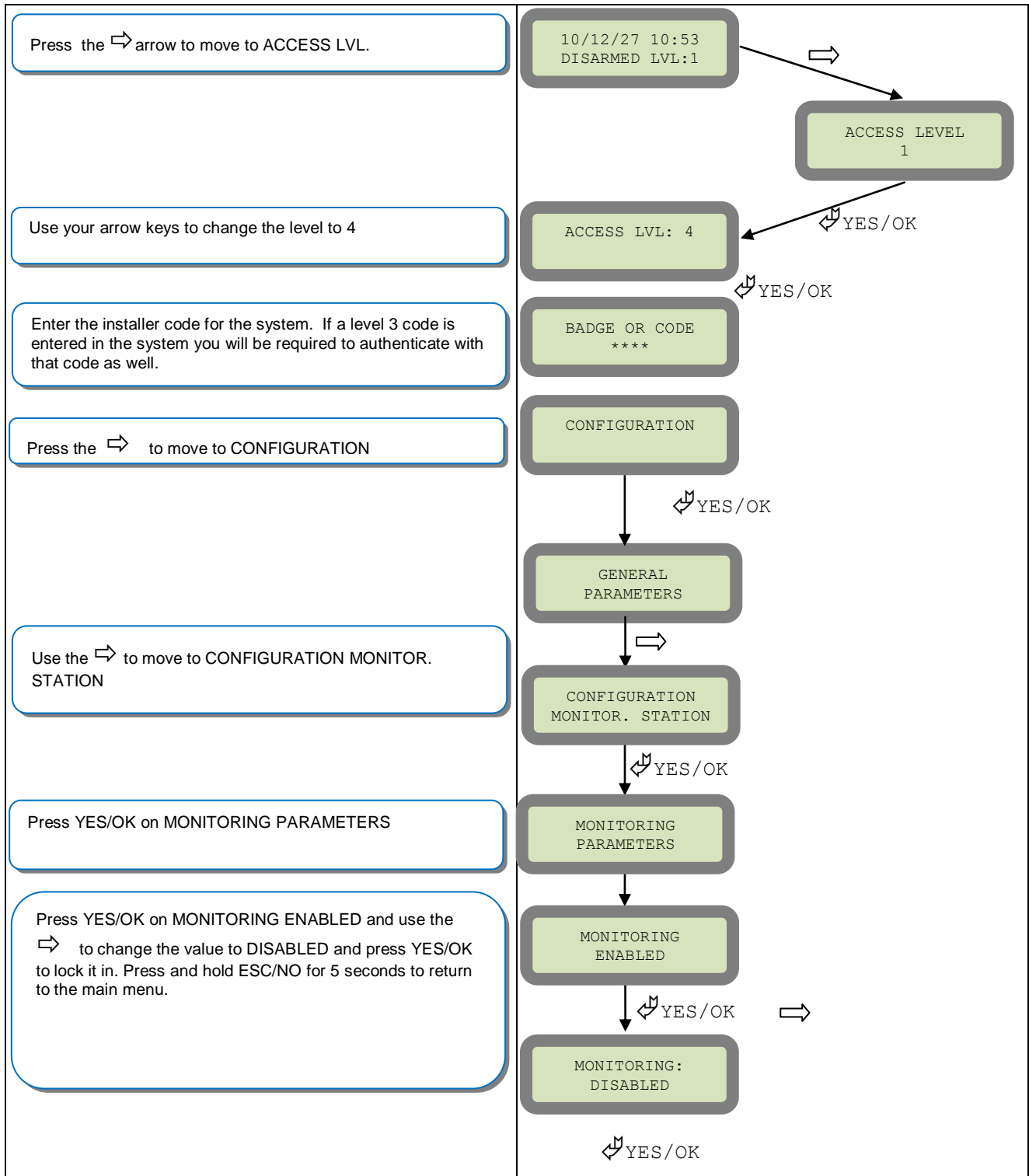
SE651/601 – Indoor and Outdoor Sirens

Place all batteries into the siren. Wait for the LED to turn on right above the programming button. Press and release the programming button.



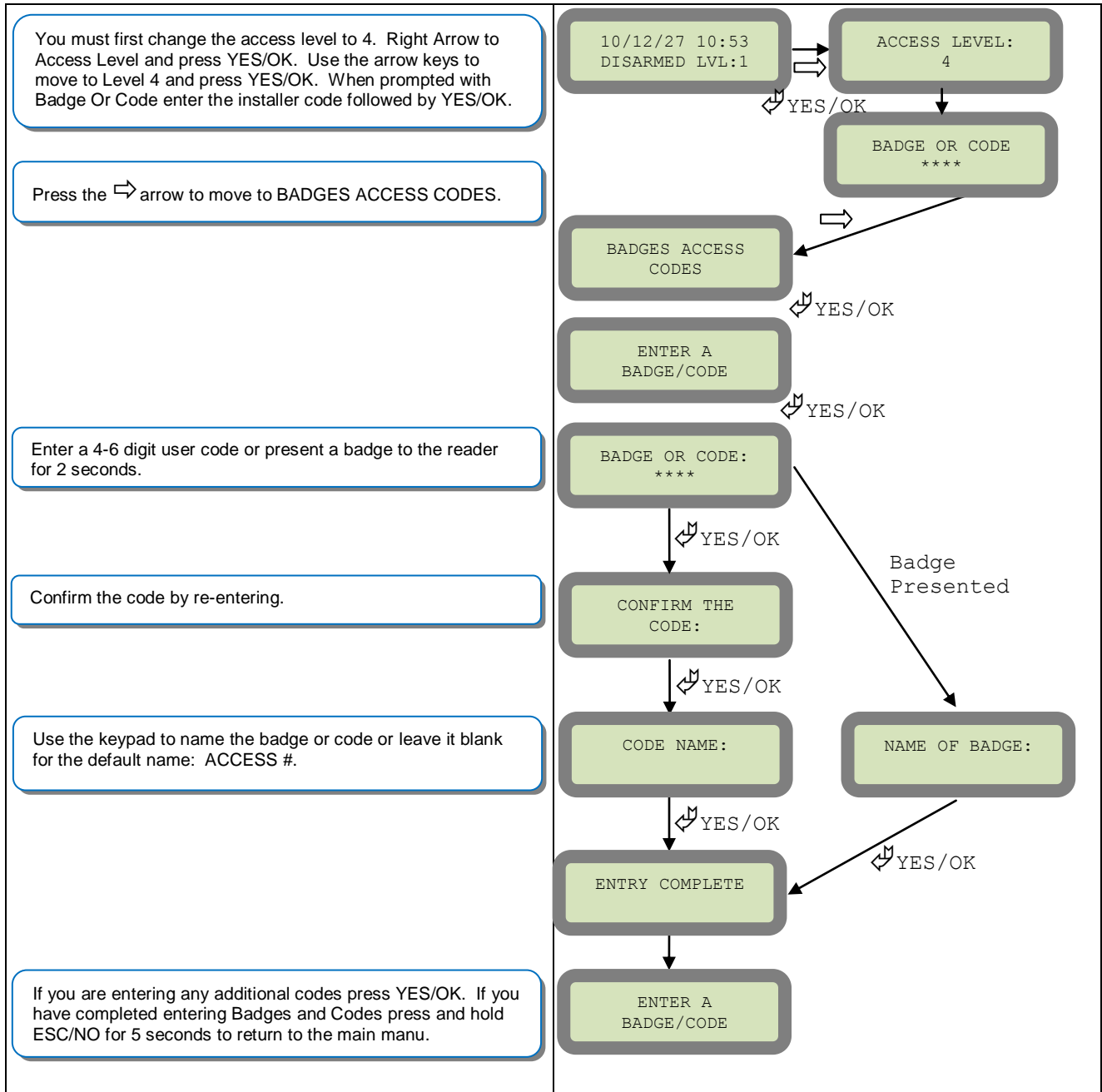
How to Disable/Enable Monitoring

Disabling monitoring can be a useful tool in many situations. Before mounting devices and moving the panel to find a good GPRS level, disabling monitoring will ensure that you will have access to programming and that unnecessary signals are not sent to the monitoring station. When performing maintenance on the system disabling monitoring until the issue has been resolved will ensure that you will have access to programming throughout your troubleshooting.



Entering a Badge or Access Code for Arming/Disarming

After Initial programming has been completed, you are not able to arm and disarm the system until you enter a user code or badge (the installer code cannot arm and disarm the system). Codes can be 4-6 digits and the 4th digit must be 2 values higher or lower than any other code on the system: Example: User code 1234, next code cannot be 1235, 1236, 1233, or 1232 – These are reserved for Silent Duress and Audible Duress. The XT system can accept up to 19 Badges or Access codes in any combination.



Reserved codes	Reserved codes	Reserved codes
000000	From 9998 to 9999	All codes +1
	From 99998 to 99999	All codes +2
	From 999898 to 999999	All codes -1
	From 314157 to 314159	All codes - 2
A total of 186 codes are forbidden		

Access level	Definition & rights
LVL1	Stand by level
LVL2	Restricted USER level where it is only possible to arm/disarm the system.
LVL3	USER level where it is possible to arm/disarm the system, check the event log, test the devices. Modifications of the setting are not possible at this level. User LVL3 can create LVL3 or LVL2 access codes.
LVL4	INSTALLER level where it is possible to modify the setup of the panel. The approval of a LVL3 or LVL2 is required to modify the level for LVL4. Installer LVL4 can create the first LVL3 access code only.

Configuration of Special Arming Modes:

To configure or modify a special arming mode, with the direction arrow go to the menu:

CONFIGURATION (LEVEL 4) + [YES/OK] → ALARM MODES PROGRAMMABLE + [YES/OK]
→ FULLY ARMED, SP1 and SP2 (use direction arrows to select the arming mode you want to modify + [YES/OK]).

For each arming mode, it is possible to specify how each of the 4 areas will be armed and how the system will behave during an alarm.

Areas: 1 2 3 4 press the corresponding number to change that areas arming option
States: A A A A state for the respective area.

Press the [YES/OK] key after this configuration step. The system will then display what siren mode will be in effect for this special profile. Select the siren mode using the direction arrows then press [YES/OK].

A	Armed
D	Disarmed
P	Perimeter Devices Only (devices must be programmed)
E	External Devices Only (devices must be programmed)

Siren	Immediate triggering of all sirens
Delay beeps	Entry/Exit delay beeps, then triggering of the sirens
Silent	No Sirens, No Beeps
Without Siren	Beeps on the keypad only

ETHERNET Parameters:

To configure or modify Ethernet Parameters, go to:

CONFIGURATION (level 4) + [YES/OK] >> GENERAL PARAMETERS + [YES/OK] >> ETHERNET + [YES/OK]

- **IP Parameters:**

1. **DHCP Enable** – IP address is assigned by the DHCP service on the network.
2. **DHCP Disable** – IP address must be defined in Ethernet parameters. IP address will NOT be automatically obtained from DHCP service on the network.

- **Constant Ethernet:**

1. **“Auto” Mode** - We recommend this mode. If main powered, the panel will be connected constantly to the local Network. In case of an alarm, the alarm will be sent in few seconds to the monitoring station. When the main power is cut, the Ethernet module will switch off after a delay (DELAY BEFORE OFF – 30 by default) in order to save battery life. In case of an alarm, the panel will at first connect to the local Network. It adds few seconds to the total process of sending an alarm.
2. **“ON” Mode** - The panel will be connected constantly to the local Network. This option will impact back-up battery life.
3. **“OFF” Mode** - For each transmission of alarm and video, the panel will connect to the local Network.

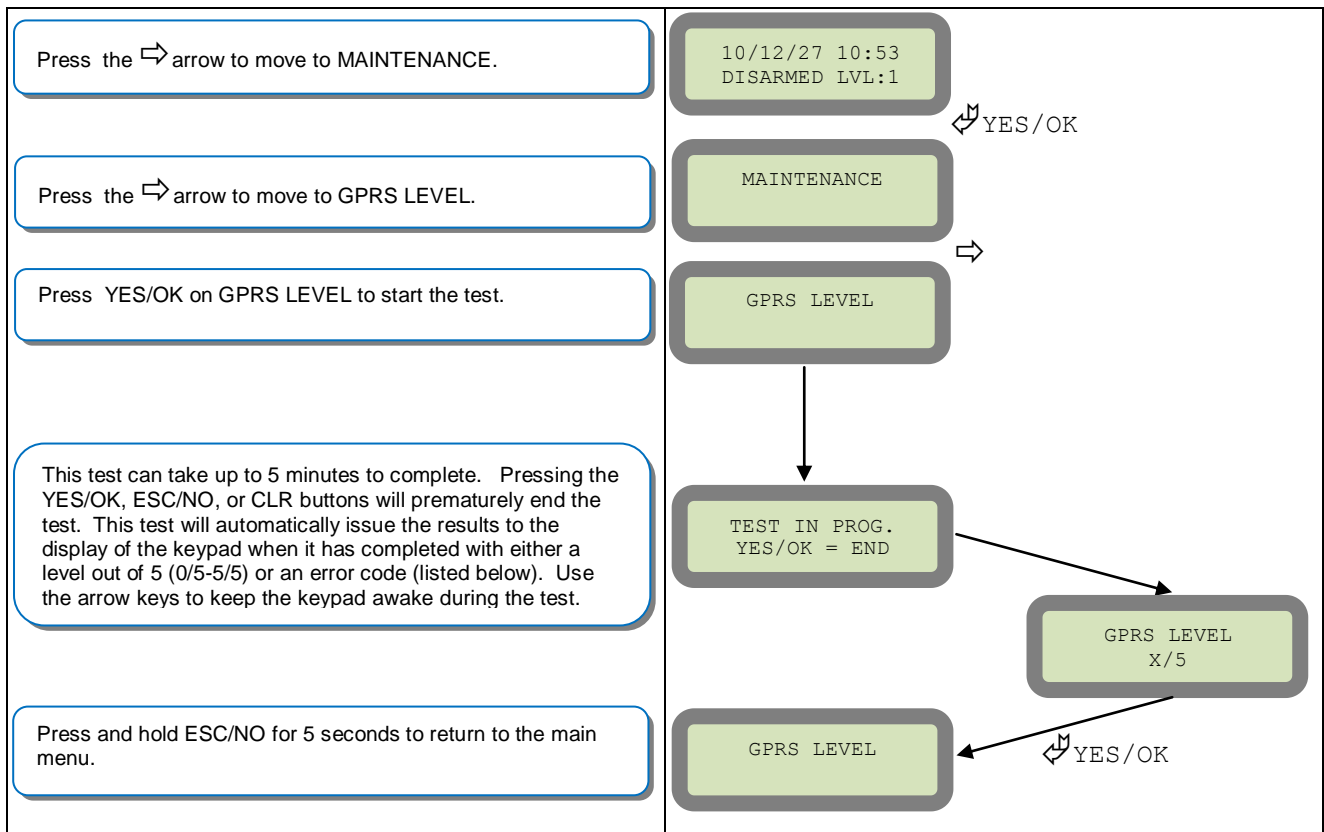
- **PING REPLY:** Enables ping response
- **Time Out Server:** In case of disconnection to the local Network, the panel will try after that time to re-connect.
- **Max Seg. Size:** Size of packet sent

Codes	Action
999999	Maintenance request - GPRS transmission
999996	Maintenance request - Ethernet transmission
999995	<p>Displays local IP address assigned to the control panel:</p> <p>If the DHCP mode is deactivated : the static local IP of the panel will be displayed (defined in the ETHERNET menu – 7)</p> <p>If the DHCP is activated:</p> <ul style="list-style-type: none"> • If the panel is not in transmission then 0.0.0.0 will be displayed • If the panel is in transmission (the RJ45 led will be flashing) then the dynamic IP of the panel will be displayed.
999991	<p>Sends a test alarm to IP1 Address (Primary alarm receiver)</p> <p>This is a quick way to check for connectivity to the monitoring center. If there is a transmission problem the panel will terminate communication faster than in an actual alarm. The system will automatically attempt connection to IP2 Address (Backup alarm receiver) in the event that IP1 is unavailable.</p>
999997	Displays external power supply status

GPRS for deployment of panel

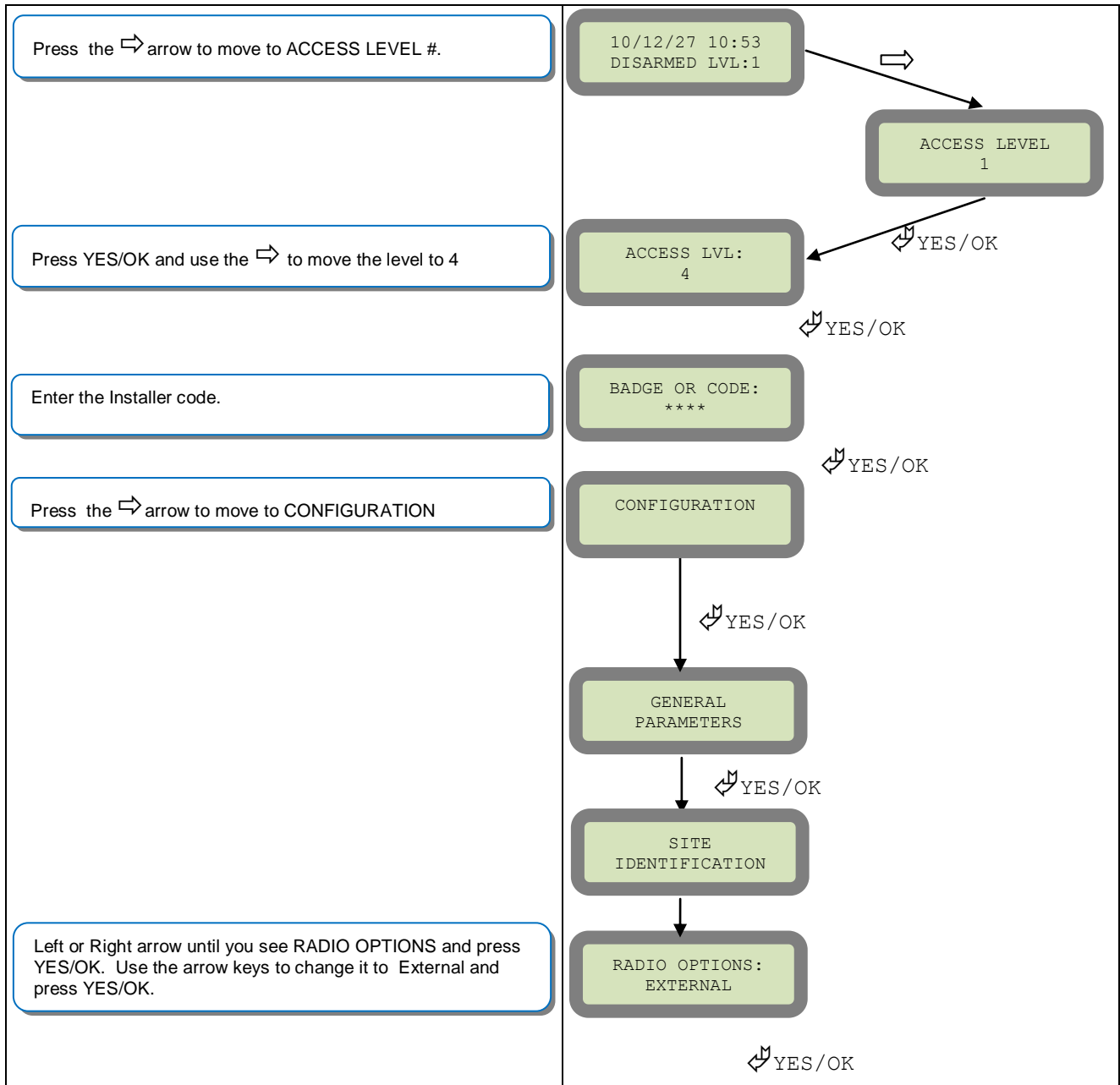
Before the system is mounted you will need to check the GPRS level to make sure it is adequate. If the level is 3/5 or better you can mount the control panel in that location.

GPRS Level	EVENT LOG	Error	Fix
010	11	SIM card not detected/not inserted	Power down control panel and check SIM card orientation and contacts
043	44	Provisioning problem	Contact the cellular provider to check provisioning and activation
132	133	SIM card not activated	Check with the cellular provider on SIM activation
255	256	Cannot connect to cell tower	Check coverage maps, bring panel outdoors to test,
003	3	SIM Card not detected/No Cellular Service	Check coverage maps, power down control panel and check SIM card orientation and contacts
030	31	No Cellular Service	Check coverage maps or with cellular provider for outages
101/57	*	Authentication Error	Check that the APN entered in the system is correct
102	*	No Cellular Service	Check coverage maps, move the panel outdoors to test, check with cellular provider for outages
149	*	Low Cellular Signal	Attempt a Yagi antenna installation to improve strength
*	47	Rejection by Host	IP, Domain Name, Port are incorrect or Receiver is rejecting the signal
013	*	Incorrect APN Code	Check with provider for proper APN information
*	13	SIM Card not detected	Power down control panel and check SIM orientation and contacts



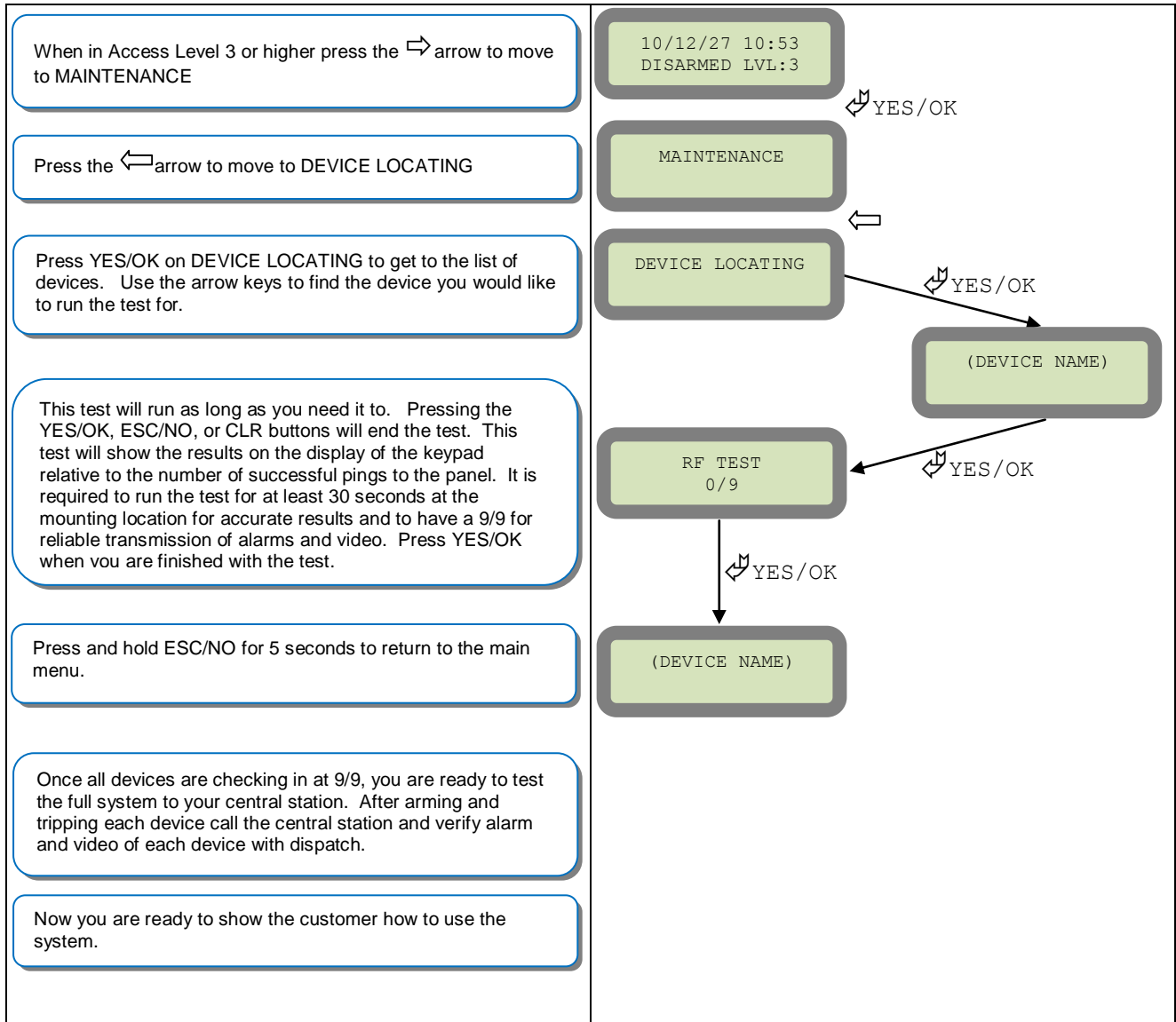
How to enable the External RF Antenna

The XTO 600/610 control panels have built in High Gain RF and GPRS antennas. The GPRS external comes pre-activated and hooked up, while the RF antenna is hooked up but needs to be activated in Configuration after you have completed initial programming. The following steps will walk you through how to enable the High Gain RF antenna after initial programming.



How to test RF for deployment of devices

Running the RF test during the mounting of devices is key to a successful Videofied installation. This test will ensure that all devices have adequate communication with the control panel. All Videofied devices are bi-directional which allows the system to ping the device and expect a response. The number of successful responses out of 9 will be displayed on the keypad for the device you are running the test for. This is also a relative range that will change in real time as you walk further away from the control panel and back closer.

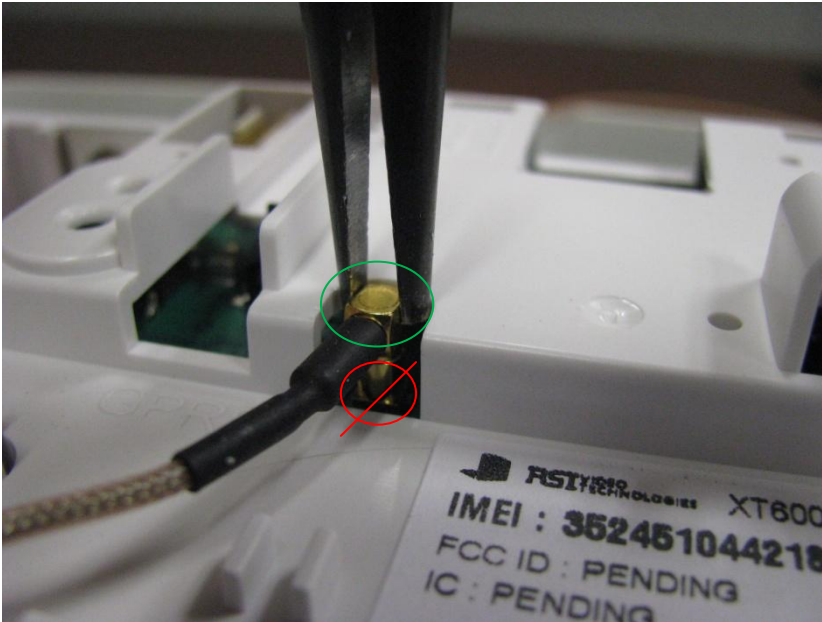


NOTE: To insure proper operation of the system you must get 9/9 with each device before mounting.

GPRS Antenna Connection

! WARNING !

Use caution before removing antenna connection. Damaged antenna connector is NOT covered under warranty.



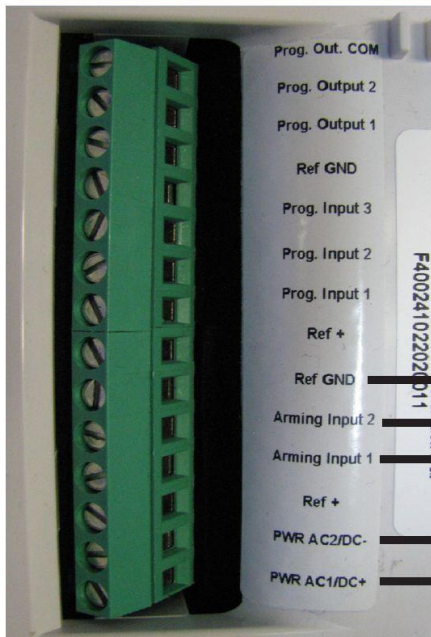
Using needle nose pliers, be sure to only grab the connector and pull directly up

XTIP Power Chart

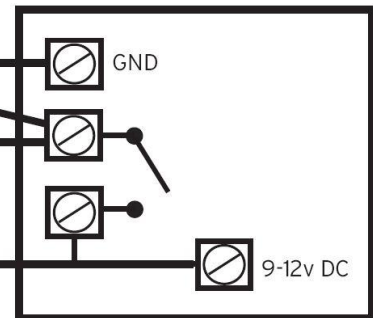
Parameters		Values		Units
		Min.	Max.	
Power	Voltage	9	15	VAC or VDC
	Current	2	/	A
Ref +	Voltage	3.5	16	VDC
	Current		50	<u>mA</u>
Arming Inputs 1&2 <u>Prog. Inputs 1,2&3</u>	Entry Inactive Voltage		~1.0	VDC
	Entry Active Voltage	~1.4	15	VDC
	Current	1.5	3	<u>mA</u>
Outputs 1&2	Switching Voltage		220VDC/250VAC	VAC or VDC
	Switching Current		4	A
	Switching Power		120	VA

Arming Input Wiring Diagram

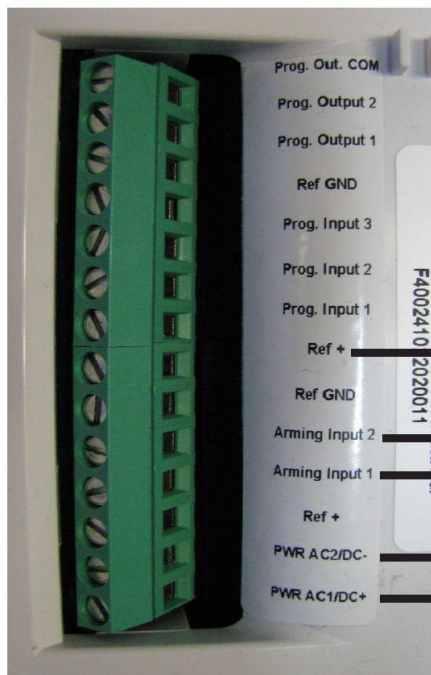
HOST SYSTEM POWERED



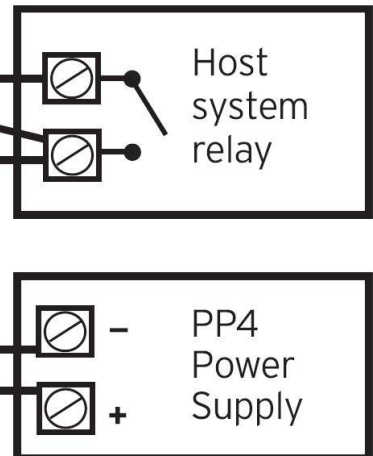
Host System Powered: In this diagram the host system will power the control panel and latch 9-12v DC to the arming inputs when armed, removing that voltage when disarmed



POWERED BY POWER SUPPLY



Powered by Power Supply (PP4): In this diagram the panel is powered by the transformer included in the PP4 kit. The host system must control the relay, closing when armed and opening when disarmed. In this case the voltage is supplied by the REF+ on the panel when the relay is closed.

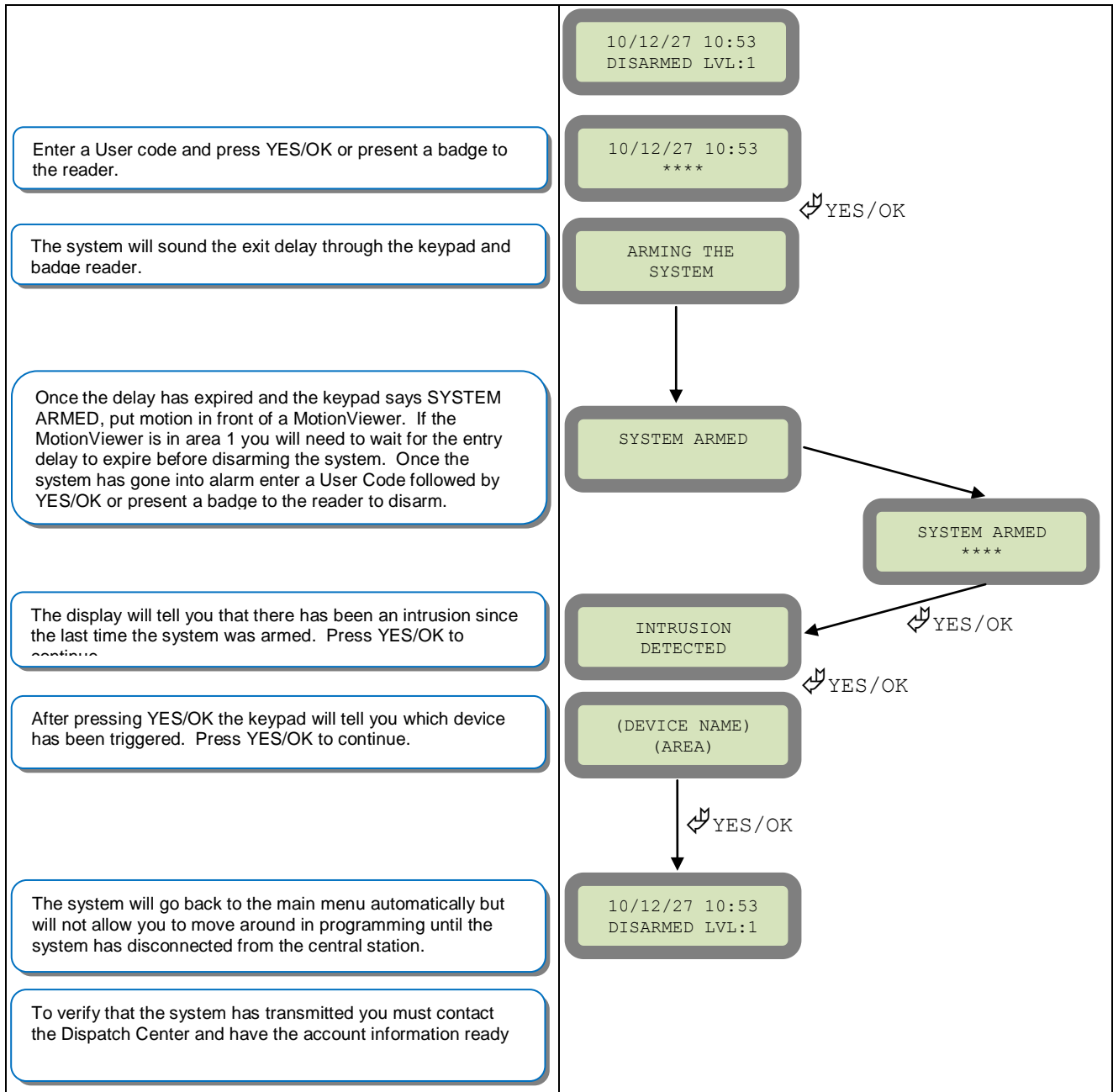


When in the 'Arm From Host' mode the Videofied system will only arm and disarm when 9-12v is supplied and sustained. When both arming inputs are supplied voltage at the same time the Videofied Keypad display will show 'SYSTEM ARMED. When only one arming input is supplied voltage the Videofied Keypad display will show 'PART LVL #'

Arming Input 1 will arm/disarm Areas 1 & 2
 Arming Input 2 will arm/disarm Areas 3 & 4

How to test to the dispatch center

Testing to the dispatch is done twice during installation. Once while you are programming the system and then again once the installation has been completely finished. Although both will use the same steps the initial test will be just confirmation using one device to verify the programming.

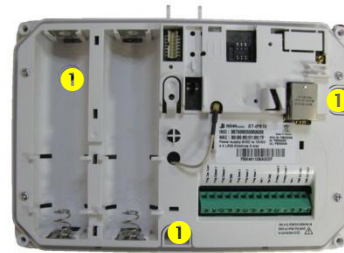


Note: Send 1 MotionViewer in at a time and verify with Central Station that they are getting Alarm and Video before tripping another MotionViewer. This will save time with the Central Station.

How to mount the XTIP and XTXIP

How to Mount the Control Panel?

Fix the back casing on the wall with 3 screws (1)



How to Mount the XTOIP

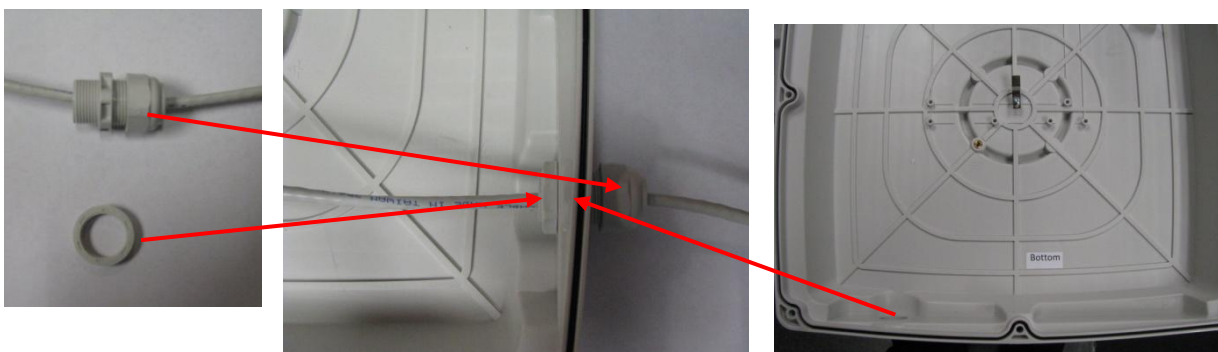
Included Mounting Hardware:

Case and Mounting Screws, locking washers, bolts and nuts.

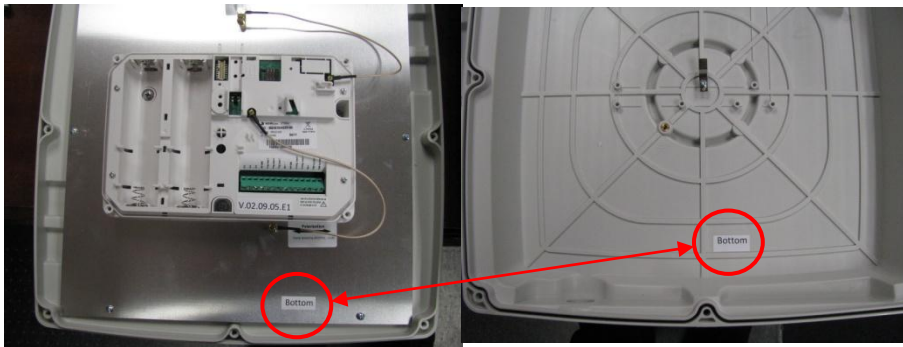


Mounting Brackets

1. Install the Weather Resistant Wire Port.



2. Place the cover on the base.



1. When closing the cover be sure to line up the two BOTTOM stickers face to face.
2. Be Careful not to slide the cover on. Instead come straight down in order to have the cover tamper properly seat.

3. Screw the cover to the base using the provided 8 screws.



NOTE: To ensure proper functioning and to keep the case water proof you must mount the panel with the wire channel facing down.

4. Place the L shaped mounting bracket onto the base using the provided bolts.



5. Place the two U shaped brackets around the pole and attach the locking bracket. Use the locking washers and nuts to attach the U bracket to the L mount.



General Programmable Input Configuration



General Configuration - Programmable Inputs

PRODUCT APPLICATION NOTE

Manufactured by RSI Video Technologies

January 2011

The RSI Video Technologies XT series control panels can accept up to 3 hard wired peripheral devices. These devices can be normally opened or closed, wet or dry.

YOU CAN ONLY USE THE INPUTS WITH ALKALINE + POWER SUPPLY

The inputs can be programmed to have unique identification name and transmit one of the standard events used by Videofied. With these capabilities you are able to perform a takeover of an existing alarm system or add in needed devices for the job that Videofied may not manufacture.

Programmable inputs 1, 2, and 3 are triggered by voltage between 9V and 15V and an intensity between 1.5mA (29V) and 3mA (@15v). If a dry contact is used to trigger the programmable inputs the REF+ output can be used to supply this dry contact.

During transmission of the programmable inputs alarm the event will be accompanied by zone 26,27,28 respectively.



Required Products:

- XT series control panel
- CMA/XMB Alphanumeric keypad
- Hard wired device with normally open or closed status

Configuration of the programmable inputs can be found at the following menu location:

With the display showing the date and time stamp along with the current Access Level. You must change your Access Level to 4. RIGHT ARROW to ACCESS LEVEL and press YES, RIGHT ARROW to ACCESS LVL: 4 and press YES. When prompted with BADGE OR CODE enter your installer code + YES.

Using the RIGHT ARROW go to CONFIGURATION and press YES, when prompted with BADGE OR CODE, enter your installer code + YES.

With the display showing GENERAL PARAMETERS press the YES key. Use the RIGHT ARROW and go to PROGRAMMABLE INPUTS and press YES. It will now show you PROGRAMMABLE INPUT 1. Use the RIGHT or LEFT ARROW keys to choose which programmable input you will be using and press YES.

DATE / TIME
DISARMED LVL: 3

ACCESS LEVEL
4

CONFIGURATION

PROGRAMMABLE
INPUT 1

General Configuration - Programmable Inputs

After choosing which programmable input you will be using you will be required to configure the input for transmission type, name, and features of the input. Press YES on the parameter, and use the ARROW KEYS to change the value and press YES. Use the ARROW KEYS to move to the next parameter.

TRANSMISSION: DISABLED

ENABLED - Will transmit the event no matter panel status

DISABLED - No transmission will be sent

ONLY IF ARMED - Will transmit the event only when the system is fully armed

TRANSMISSION
ENABLED

ALARM MODE: ALARM

ALARM = Appearance of the event only

ALARM/END = Appearance and restoral of the event

ALARM MODE:
ALARM

INPUT TYPE: NORMALLY OPEN

The INPUT TYPE will depend on whether or not the external wired device you will be hooking up to the Input terminal is Open or Closed in its normal (non alarm) state.

INPUT TYPE
NORMALLY OPEN

EVENT TYPE: INTRUSION

The Event type determines the event that is sent to the central station when the programmable input is triggered.

EVENT TYPE
INTRUSION

Event Types:	Capable Alarm Modes
INTRUSION -	Alarm
TAMPER -	Alarm or Alarm/End
PANIC BUTTON -	Alarm
INCORRECT CODE -	Alarm
DURESS CODE 1-	Alarm
SUPERVISION -	Alarm or Alarm/End
RADIO JAMMING -	Alarm or Alarm/End
LOW PANEL BATT -	Alarm
LOW DEVICE BATT-	Alarm
AC POWER MISS. -	Alarm or Alarm/End
PANEL RESET -	Alarm
SYSTEM ARMED -	Alarm
SYSTEM DISARMED -	Alarm
PERIODIC TEST-	Alarm
ALARM CANCEL -	Alarm
SMOKE DETECTION -	Alarm
PHONELINE MISS. -	Alarm
TMT REQUEST -	Alarm

General Configuration - Programmable Inputs

INPUT NAME is the name that the Central Station will see when this input is triggered. This should describe the function of the device hooked up to the input.

INPUT NAME
PANIC VIDEO

SIREN MODE: SIREN - This will determine how the siren will function when the programmable input is activated.

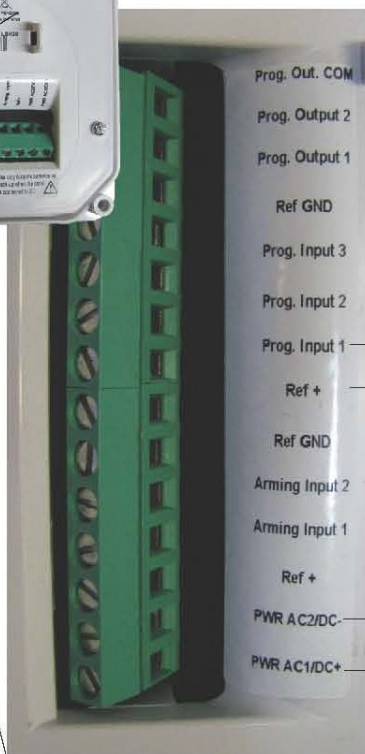
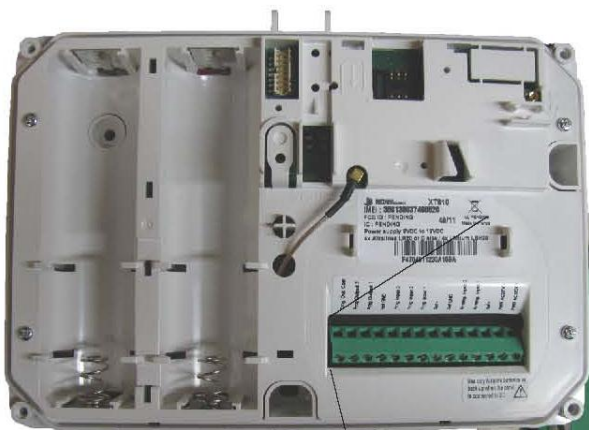
SIREN MODE
SIREN

- SIREN - Activation of all sirens on the system
- WITHOUT SIREN - Only Keypad and Badge Reader sounders
- SILENT - No activation of any sounders or sirens
- DELAY BEEPS - Sounding of delay beeps then full siren

MAPPING: DISABLED - This is a 1 to 1 relationship between a MotionViewer and the programmable input. When the programmable input is triggered it will force the chosen MotionViewer to take a 10 second Video no matter the current status of the MotionViewer. We suggest that this is only used when using the event types INTRUSION and PANIC or the video will not auto download at the Central Monitoring Station.

MAPPING
CAMERA 1

Parameters		Values		Units
		Min.	Max.	
Power	Voltage	9	15	VAC or VDC
	Current	2	/	A
Ref +	Voltage	3.5	16	VDC
	Current		50	mA
Arming Inputs 1&2 Prog. Inputs 1,2&3	Entry Inactive Voltage		~1.0	VDC
	Entry Active Voltage	~1.4	15	VDC
	Current	1.5	3	mA
Outputs 1&2	Switching Voltage		220VDC/250VAC	VAC or VDC
	Switching Current		4	A
	Switching Power		120	VA



3rd party device

When using the inputs the panel must be powered by 4 Alkaline D-cell batteries and a 12v DC power supply. The power supply must be hooked up to these terminals.

General Programmable Output Configuration



General Configuration - Programmable Outputs

PRODUCT APPLICATION NOTE

Manufactured by RSI Video Technologies

July 2011

The RSI Video Technologies XT series control panels can trigger up to 2 relays hard wired to external devices you would like activated based on an event in the Videofied control panel.

YOU CAN ONLY USE THE OUTPUTS WITH ALKALINE + POWER SUPPLY

Programmable Outputs can be triggered by a specific event, programmable input, or arming input and can stay latched for up to 180 seconds.

This application note will focus on the configuration and use of the programmable outputs.



Required Products:

XT series control panel

CMA/XMB Alphanumeric keypad

External device that you would like to trigger

Configuration of the programmable Outputs can be found at the following menu location:

With the display showing the date and time stamp along with the current Access Level. You must change your Access Level to 4. RIGHT ARROW to ACCESS LEVEL and press YES, RIGHT ARROW to ACCESS LVL: 4 and press YES. When prompted with BADGE OR CODE enter your installer code + YES.

Using the RIGHT ARROW go to CONFIGURATION and press YES, when prompted with BADGE OR CODE, enter your installer code + YES.

With the display showing GENERAL PARAMETERS press the YES key. Use the RIGHT ARROW and go to PROGRAMMABLE OUTPUTS and press YES. It will now show you OUTPUT 1. Use the RIGHT or LEFT ARROW keys to choose which programmable output you will be using and press YES.

DATE / TIME
DISARMED LVL: 3

ACCESS LEVEL
4

CONFIGURATION

OUTPUT 1

General Configuration - Programmable Outputs

After choosing which programmable output you will be using you will be required to configure the output for triggering event, and features of the output. Press YES on the parameter, and use the ARROW KEYS to change the value and press YES. Use the ARROW KEYS to move to the next parameter.

STATUS: DISABLED

- ENABLED - Will activate the output based on the configuration
- DISABLED - Output will not be triggered

TRANSMISSION
ENABLED

LENGTH ACTIV: (0-180sec)

- ALARM = Appearance of the event only
- ALARM/END = Appearance and restoral of the event

ALARM MODE:
ALARM

EVENT TRIGGER TYPE: INTRUSION

The Event type determines the event that is used to trigger the programmable output.

Event Types:

INTRUSION -	SYSTEM ARMED -
TAMPER -	SYSTEM DISARMED -
PANIC BUTTON -	PERIODIC TEST-
INCORRECT CODE -	ALARM CANCEL -
DURESS CODE-	SMOKE DETECTION -
DURESS CODE-	PHONELINE MISS. -
SUPERVISION -	TMT REQUEST -
RADIO JAMMING -	PROGRAMMABLE INPUT 1-
LOW PANEL BATT -	PROGRAMMABLE INPUT 2 -
LOW DEVICE BATT-	PROGRAMMABLE INPUT 3 -
AC POWER MISS. -	ARMING INPUT 1-
PANEL RESET -	ARMING INPUT 2 -

EVENT TYPE:
INTRUSION

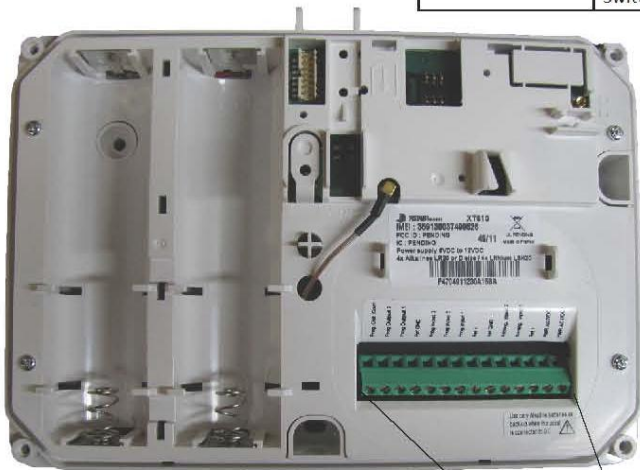
OUTPUT NAME:

Allows you to name the programmable output for identification.

OUTPUT NAME

General Configuration - Programmable Outputs

Parameters		Values		Units
		Min.	Max.	
Power	Voltage	9	15	VAC or VDC
	Current	2	/	A
Ref +	Voltage	3.5	16	VDC
	Current		50	mA
Arming Inputs 1&2 Prog. Inputs 1,2&3	Entry Inactive Voltage		~1.0	VDC
	Entry Active Voltage	~1.4	15	VDC
	Current	1.5	3	mA
Outputs 1&2	Switching Voltage		220VDC/250VAC	VAC or VDC
	Switching Current		4	A
	Switching Power		120	VA



- Prog. Out. COM
- Prog. Output2
- Prog. Output1
- Ref GND
- Prog. Input3
- Prog. Input2
- Prog. Input1
- Ref+
- Ref GND
- Arming Input2
- Arming Input1
- Ref+
- PWR AC2/DC-
- PWR AC1/DC+

When triggering an external hardwired device you must be hooked up here.

If the external device requires power you must jumper from Ref+ to Prog. Out. Com

When using the ioutputs the panel must be powered by 4 Alkaline D-cell batteries and a 12v DC power supply. The power supply must be hooked up to these terminals.

Scheduling Configuration



X SERIES - SCHEDULING

PRODUCT APPLICATION NOTE

Manufactured by RSI Video Technologies

May 2012

The RSI Video Technologies X series control panels allow you to enter a seven day schedule by setting upto 99 appointments for arming and disarming the system at specific times on specific days.

The Scheduling feature is only activated on control panel firmware listed V.02.32.00.XX or newer. In order to use the feature you must enable it in the software and configure the required schedules for the job.

This feature can be programmed using the CMA/XMB keypad or the Frontel TMT Installer program v2.6.6.6 or newer.

Required Products:

- XT series control panel with version sticker V.02.32.00.XX
- XL series control panel with version sticker V.02.32.00.XX
- CMA/XMB- Alpha Numeric Keypad or Frontel TMT Installer V2.6.6.6 or newer

When installing a system that will utilize the scheduling feature you will need to complete the full initial installation including adding a user code before going into the configuration of the schedule.



XL VERSION STICKER LOCATION



XT VERSION STICKER LOCATION

Note: If the system is programmed you can find the firmware version by hitting the 0 key 6 times followed by YES. (000000+YES).
 On newer version of the control panels the version will be directly on the product sticker.

The following instructions will explain how to program the Programmable input for mapping video from a MotionViewer when the hard wired panic is triggered.

DATE / TIME
DISARMED LVL: 1

With the display showing the date and time stamp along with the current Access Level. You must change your Access Level to 4. RIGHT ARROW to ACCESS LEVEL and press YES, RIGHT ARROW to ACCESS LVL: 4 and press YES. When prompted with BADGE OR CODE enter your installer code + YES.

ACCESS LEVEL
4

PRODUCT APPLICATION NOTE: SCHEDULING

Using the RIGHT ARROW go to CONFIGURATION and press YES, If prompted with BADGE OR CODE, enter your installer code + YES.

CONFIGURATION

With the display showing GENERAL PARAMETERS press the LEFT ARROW until you see AREAS AND DEVICES and press YES.

AREAS AND DEVICES

The display will show DEVICES. Press the LEFT ARROW key until the display shows SCHEDULES press YES.

SCHEDULES

With the display showing SCHEDULES OFF press YES and use the RIGHT ARROW to change it to ENABLE and press YES.

SCHEDULES
ENABLE

Use the RIGHT ARROW to move to CALENDAR MANAGEMENT and press YES.

CALENDAR
MANAGEMENT

Display shows NEW ENTRY ? OK/YES or ESC/NO, press YES to create a new action.

NEW ENTRY ?
OK/YES ESC/NO

Use the ARROW KEYS to move the hour that you would like the system to perform its first action. The system uses a 24 hour clock. Press YES when the hour has been chosen. Do the same for the Minute (you will see the two lines above the hour move to the minute after pressing YES).

--
05:00 OPEN 01

--
05:30 OPEN 01

With the lines now over the OPEN, use the arrow keys to choose between OPEN action and CLOSE action and press YES.

05:30 OPEN 01

Now the display shows (1=Mon...7=SUN). To choose the days that this action will take place press the corresponding numbers and press YES.

02:00 OPEN 01
12345 (1=Mon...7=

EXAMPLE: If you want it to happen only on weekdays you would press, 1, 2, 3, 4, 5.

The system will now ask if the action is OK allowing you to double check the schedule you are about to confirm. Press YES if everything looks correct.

02:00 OPEN 01
12345 -- OK?

The display will now show all schedules that have been entered in chronological order. You can use the ARROW KEYS to cycle through them.

02:00 OPEN 01
12345 --

PRODUCT APPLICATION NOTE: SCHEDULING

ADDITIONAL CONFIGURATION OPTIONS

1. To enter a new schedule action with the display showing the current scheduling action press YES and YES again to put in a NEW ENTRY.

2. To modify a schedule action, with the display showing the current scheduling action press YES then RIGHT ARROW to MODIFY ENTRY and press YES.

3. When scheduling is enabled on the panel you can see a S next to the LVL:# on the main screen.

Thur 04/28 16:18
DISARMED LVL :4 S

4. By default the system will sound arming warnings at 10min, 5min, and 1min. To disable this you will access AREAS AND DEVICES and LEFT ARROW to WARNING BIP ENABLED.

WARNING BIP
ENABLED

4.1 Press YES on WARNING BIP ENABLED and use the ARROW KEYS to change it to DISABLED and press YES.

WARNING BIP
DISABLED

5. When using Frontel TMTIV2.6.6.6. you must add the line
Managelocsched=1

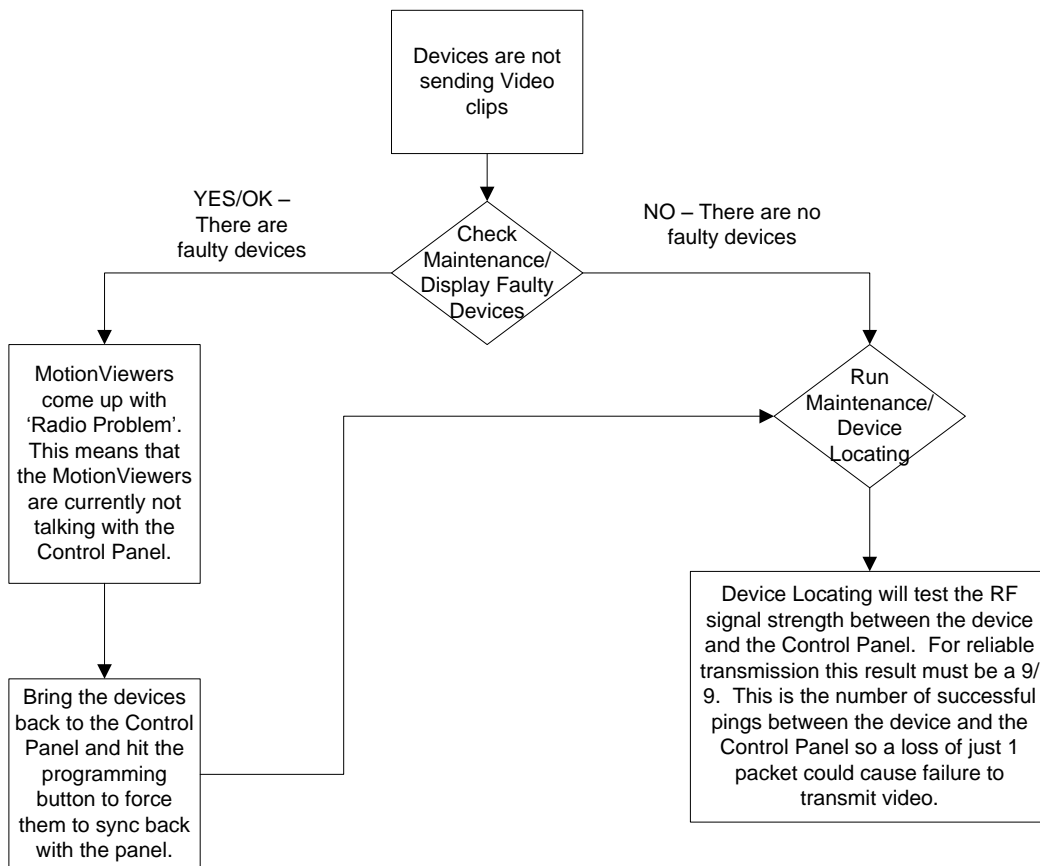
to the Frontel.ini located in the Frontel2/Bin folder in your installation. Once this has been added you must restart Frontel.

Troubleshooting

Monitoring Station is not getting ANY video but is getting signals:

Good communication between the MotionViewers and the Control Panel is key to getting successful video to the monitoring station. During mounting of any device on your Videofied system you must run the Radio Range/Device Locating test to ensure that the mounting location is with-in range of the Control Panel.

- Concrete, Metal and earth are some of the largest RF inhibitors and should be taken into account when choosing mounting locations.
- When running the Radio Range/Device Locating test you should have the site as close to the same as it would be when the site is closed/no one is there, i.e. close garage doors/service doors, etc. Device locating steps can be found on Page 17.

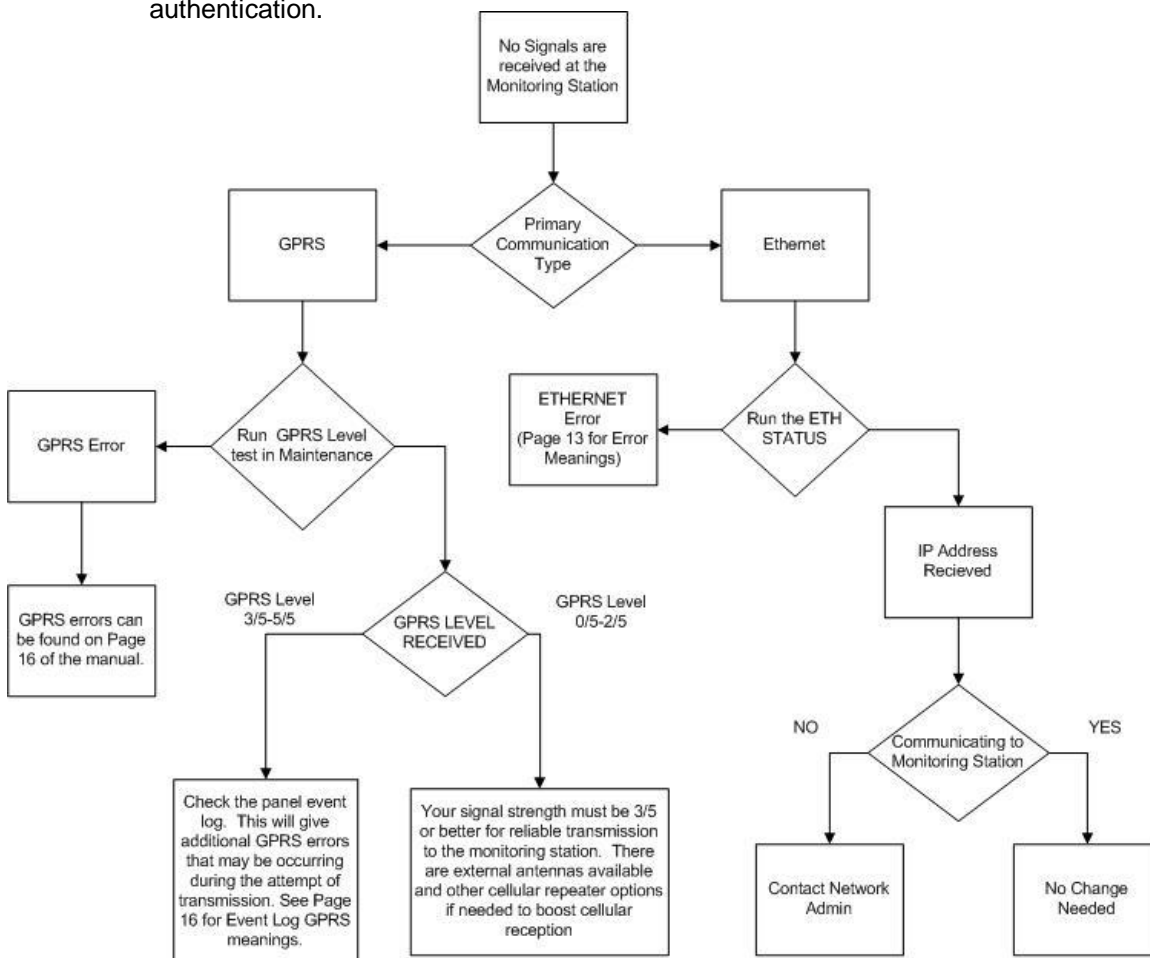


Important Note: Videofied will only automatically download the first MotionViewer video that is taken and only if this is the primary event or reason for the panel connecting with the monitoring station. If the account is on test you will only ever get the first video downloaded. If you are only getting the events at the station and all tests above pass more than likely you are sending a preceding event (like an arming signal or door contact) which will cause the video to not auto download because the video is not the primary event.

Monitoring Station is not getting any signals:

Communication between the Control Panel and the Monitoring Station is either over the Ethernet Connection or GPRS side of the GSM cellular network.

- Go into Maintenance and run the ETH STATUS to see if you receive back an IP Address or error.
- If you receive an IP Address back you will want to contact and consult the network admin to make sure the outbound port is not being blocked (Port 1 programmed in the panel).
- If you are using GPRS as the primary communication, you will want to check your GPRS level to see if there is an error/level is too low. You must have a 3/5 or better for reliable transmission to the Monitoring Station. How to run the GPRS level test and GPRS error codes can be found on page 16.
- If you receive a successful GPRS level test you will want to check the panel event log for more GPRS errors that could be occurring during the attempted transmission but after cellular authentication.



Panel is staying CONNECTED WITH MONITOR STATION

While the Control Panel is attempting or is connected with the Monitoring Station you will see this message when you attempt to move around on the keypad. If the system is not successful in connecting with the station it will retry the connection multiple times, locking you out of programming until it is done trying. This normally can take anywhere between 15-20 minutes.

- If you want to force the panel to disconnect you must
 - 1. Remove the batteries from the control panel
 - 2. Secure the cover tamper of the panel
 - 3. Re-insert the batteries into the control panel and sync the keypad back by pressing the CLR and ESC/NO buttons at the same time.
 - 4. Access the Configuration menu by changing you access level to 4 and go to Configuration Monitor Station.
 - 5. In Monitoring Parameters – Disable monitoring until the connection issue is resolved.

Unable to record device or getting 'Pairing Failure' error

This usually occurs when the device still has a pairing key from a previous system or setup. To perform a pairing key override:

- 1. Remove all batteries from the device.
- 2. Make sure your system is ready to record devices:
 - A. If learning in the keypad, press the panel's programming button. **DO NOT HOLD THE PANEL'S PROGRAMMING BUTTON**
 - B. If learning in additional devices, make sure the keypad reads 'Press Programming Button Of Device'
- 3. Insert a single battery into the device.
- 4. Wait 1 second for device to power up.
- 5. Press programming button of device (for keypads press 'CLR' & 'ESC/NO' keys at the same time)

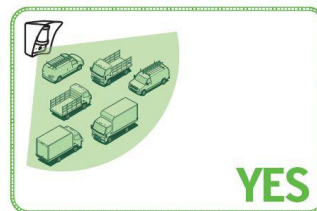
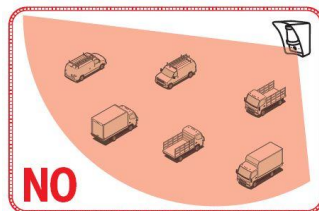
For the 4-button remote keyfobs the process is slightly different:

- 1. Press and hold the 'ON' and 'OFF' keys at the same time for 12 seconds
- 2. Wait 1 second
- 3. Press and hold the 'ON' and 'OFF' keys at the same time for 5 seconds, you should hear 4 beeps from the keyfob.

Outdoor MotionViewer Trips All the Time:

It is important to follow these basic installation tips when mounting and aiming an outdoor MotionViewer

- 1. Protect your assets, not the whole area.
 - Secure specific assets or clusters of assets rather than cover a large area where the range of the MotionViewer might extend beyond the assets and detect irrelevant objects.



- 2. Terminate the view of the MotionViewer.
 - Make sure to tilt the MotionViewer down 5-7° so that its top line of sight terminates into the ground. Taking into account all three elements; PIR, digital video camera, and infrared illuminators – you will want to terminate the view of the MotionViewer at 40 ft. from the device.

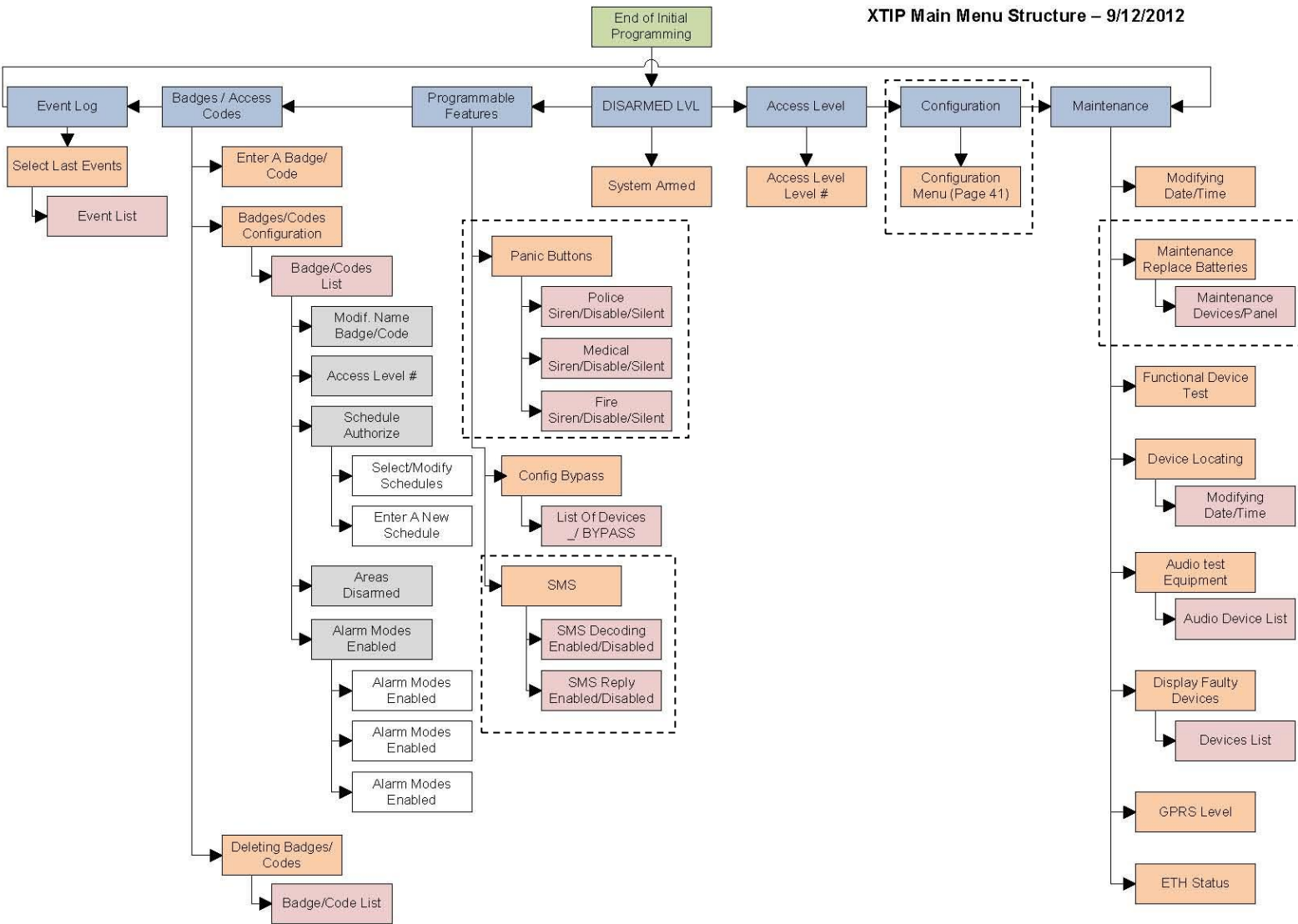


XTIP -SERIES 'AFTER INITIAL PROGRAMMING' FLOW CHART

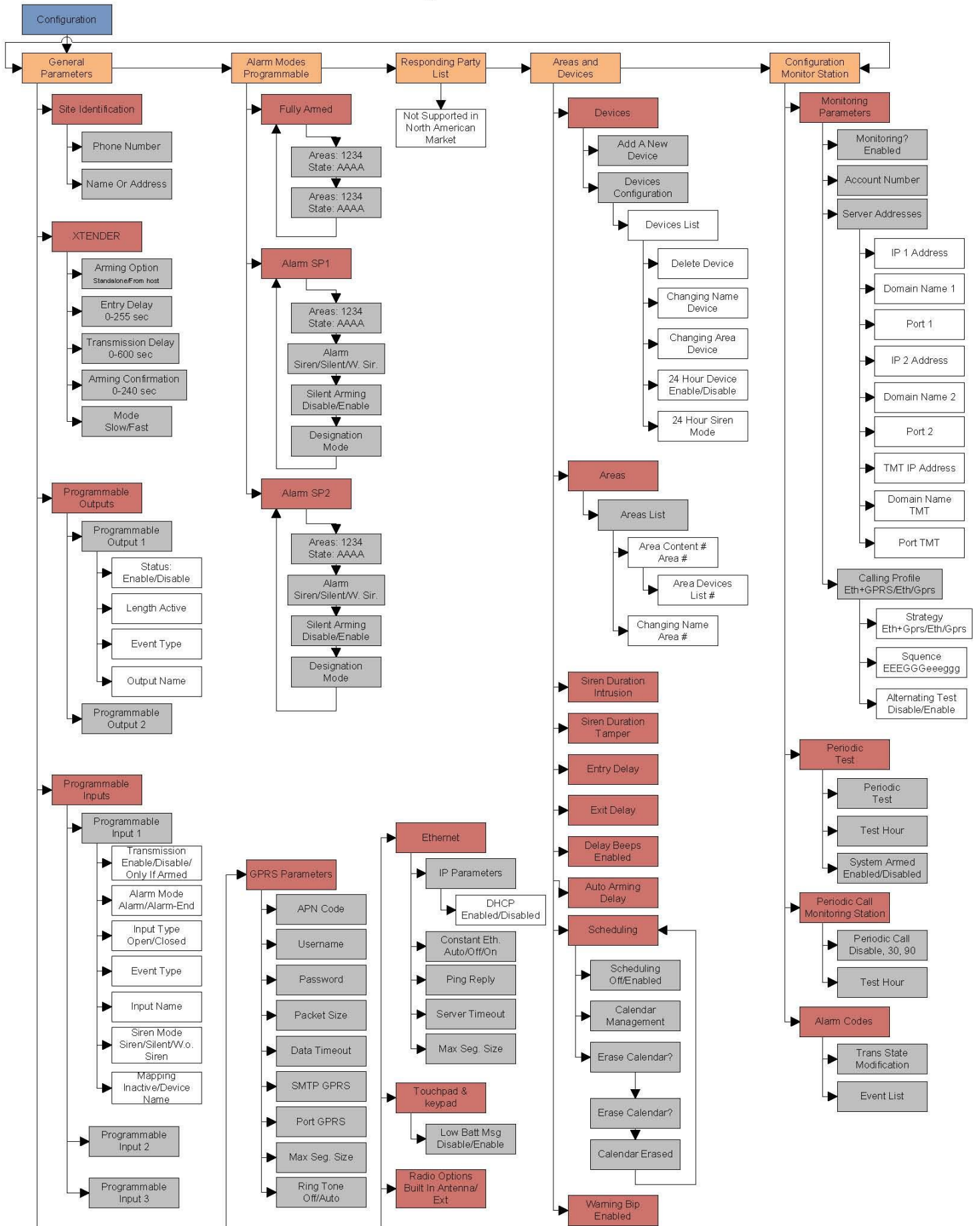


Parameters are only available in Access Level 4

XTIP Main Menu Structure – 9/12/2012



XTIP Configuration Menu



Addendum

1. LSH20 Control Panel Batteries:

Primary lithium battery LSH 20

3.6 V Primary lithium-thionyl chloride (Li-SOCl₂)
High power
D-size spiral cell



Cell size references		UM1 - R20 - D
Electrical characteristics		
<i>(typical values relative to cells stored for one year or less at +30°C max.)</i>		
Nominal capacity		13.0 Ah
<i>(at 15 mA + 20°C 2.0 V cut off. The capacity restored by the cell varies according to current drain, temperature and cut off)</i>		
Open circuit voltage	(at + 20°C)	3.67 V
Nominal voltage	(at 2 mA + 20°C)	3.6 V
Pulse capability: Typically up to 4000 mA <i>(4000 mA/D. 1 second pulses, drained every 2 mn at + 20°C from undischarged cells with 10 µA base current, yield voltage readings above 3.0 V. The readings may vary according to the pulse characteristics, the temperature, and the cell's previous history. Fitting the cell with a capacitor may be recommended in severe conditions. Consult Saft)</i>		
Maximum recommended continuous current		1800 mA
<i>(to maintain cell heating within safe limits. Battery packs may imply lower level of maximum current and may request specific thermal protection. Consult Saft)</i>		
Storage	(recommended) (for more severe conditions, consult Saft)	+ 30°C (+ 86°F) max
Operating temperature range		- 60°C/+ 85°C (- 76°F/+ 185°F)
<i>(Operation above ambient T may lead to reduced capacity and lower voltage readings at the beginning of pulses. Operation with current continuously above 1 A may restrict upper T range. Consult Saft)</i>		

2. LS14500 Peripheral Batteries: Excludes SE601 and SE651

Primary lithium battery LS 14500

3.6 V Primary lithium-thionyl chloride (Li-SOCl₂)
High energy density
AA-size bobbin cell



Cell size references		R6 - AA
Electrical characteristics		
<i>(typical values relative to cells stored for one year or less at +30°C max.)</i>		
Nominal capacity		2.6 Ah
<i>(at 2 mA + 20°C 2.0 V cut-off. The capacity restored by the cell varies according to current drain, temperature and cut-off)</i>		
Open circuit voltage	(at + 20°C)	3.67 V
Nominal voltage	(at 0.2 mA + 20°C)	3.6 V
Pulse capability: Typically up to 280 mA <i>(280 mA/D. 1 second pulses, drained every 2 mn at + 20°C from undischarged cells with 10 µA base current, yield voltage readings above 3.0 V. The readings may vary according to the pulse characteristics, the temperature, and the cell's previous history. Fitting the cell with a capacitor may be recommended in severe conditions. Consult Saft)</i>		
Maximum recommended continuous current		70 mA
<i>(Higher currents possible, consult Saft)</i>		
Storage	(recommended) (for more severe conditions, consult Saft)	+ 30°C (+ 86°F) max
Operating temperature range		- 60°C/+ 85°C (- 76°F/+ 185°F)
<i>(Operation above ambient T may lead to reduced capacity and lower voltage readings at the beginning of pulses. Consult Saft)</i>		

3. Lithium Battery Storage:

Storage

- The storage area should be clean, cool (*preferably not exceeding + 30°C*), dry and ventilated.

Warning

- Fire, explosion and burn hazard.
- Do not recharge, short circuit, crush, disassemble, heat above 125°C (257°F), incinerate, or expose contents to water.
- Do not solder directly to the cell (*use tabbed cell versions instead*).

4. Finding Manufacture Week and Year:

The Manufacture week and year can be found in the serial number of the device/control panel. The second sets of 4 numbers in the serial number are WWYY.

####0411##### = Which shows that this device was manufactured in the 4th week of 2011.

5. Event Log Ethernet Codes

Log Code	Meaning
Ethernet Off	Ethernet interface is OFF
Ethernet On	Ethernet interface is ON
Ethernet (0)	Ethernet Error
Ethernet (1)	No DHCP reply (after MAX DHCP RETRY)
Ethernet (2)	No Frontel reply (after TIMEOUT SERVER)
Ethernet (255)	Ethernet communication success
Ethernet Lost	No Ethernet cable detected
Ethernet Returned	Ethernet cable restored

6. Additional System Codes

Codes	Action
999999	Maintenance request - GPRS transmission
999996	Maintenance request - Ethernet transmission
999995	<p>Displays local IP address assigned to the control panel:</p> <p>If the DHCP mode is deactivated : the static local IP of the panel will be displayed (defined in the ETHERNET menu – 7)</p> <p>If the DHCP is activated:</p> <ul style="list-style-type: none"> • If the panel is not in transmission then 0.0.0.0 will be displayed • If the panel is in transmission (the RJ45 led will be flashing) then the dynamic IP of the panel will be displayed.
999991	<p>Sends a test alarm to IP1 Address (Primary alarm receiver)</p> <p>This is a quick way to check for connectivity to the monitoring center. If there is a transmission problem the panel will terminate communication faster than in an actual alarm. The system will automatically attempt connection to IP2 Address (Backup alarm receiver) in the event that IP1 is unavailable.</p>
999997	Displays external power supply status