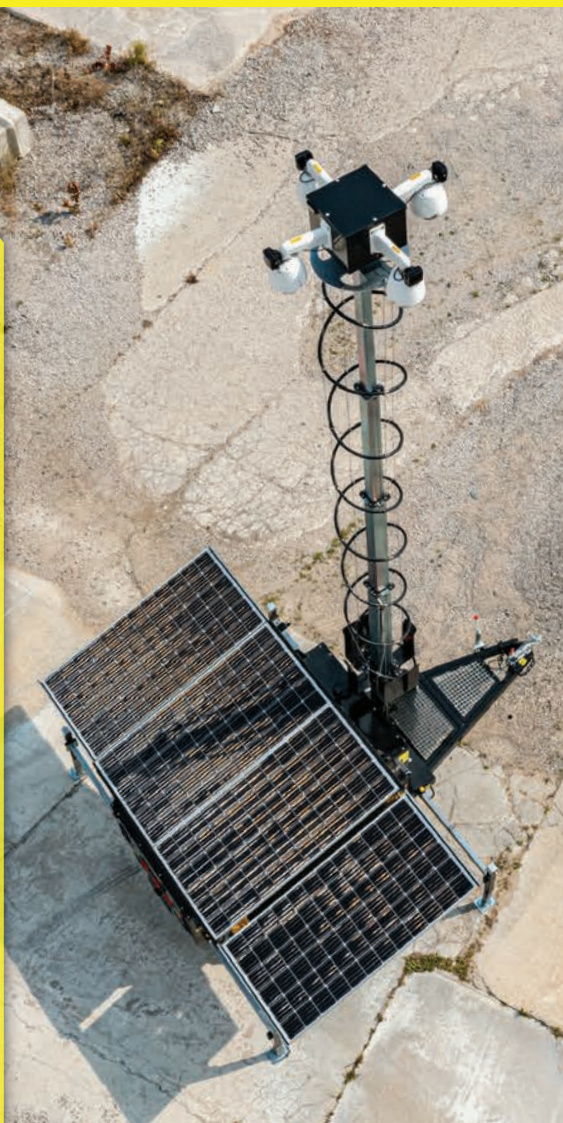




- Our rapidly deployable S-Series is designed for the construction industry to meet the rugged demands of any application.
- **Advanced AI Analytics:**
 - Timelapse - daily and full project videos
 - Person/vehicle detection, restricted parking, crowd detection
 - Camera shift - identify and alert a shifting in the camera position
 - Camera cover - identify and alert on a camera being covered or blurred
 - Idle person - detects individual idling longer than configured amount of time in area of interest
 - Staff management - absence of a guard or service provider



S-SERIES

TECHNICAL SPEC SHEET

PRODUCT FEATURES:

- Onboard smart camera hub
- Onboard redundant hard drive storage
- 1,380W of solar
- 2000 Ah of AGM storage batteries
- Mast height: 30' from ground
- 4G LTE cellular router
- 2MP PTZ cameras with 25x zoom
- PA speaker (live & pre-recorded audio)
- Optional automatic LP generator package (equipped with 2 - 30lb LP tanks)

APPLICATIONS:

Industrial, Manufacturing, Construction
Entertainment
State and Federal Law Enforcement
DOT's, Traffic Monitoring
FEMA, TSA, Emergency Management
Oil and Gas
Colleges/Universities

SPECIFICATIONS

OFFSITE REMOTE CONTROLS: Auto ping 8 point controller

- 1 Router-auto ping with auto reboot if ping fails
- 2 Cameras with remote on/off
- 3 IR Illuminators with remote on/off
- 4 NVR with remote on/off
- 5 Strobes with remote on/off
- 6 AI device with Remote on/off
- 7 Network switch with remote on/off
- 8 Spare for special applications

BATTERY BACKUP: 8 x 250 Ah AGM batteries

NETWORK: 4G LTE wireless router

LOW VOLTAGE DISCONNECT: For battery protection

CONTROL HOUSING: Lockable

EQUIPMENT PANEL: Thermostatically controlled cooling fan

VIDEO STORAGE: Onboard NVR with up to 30 days of video playback

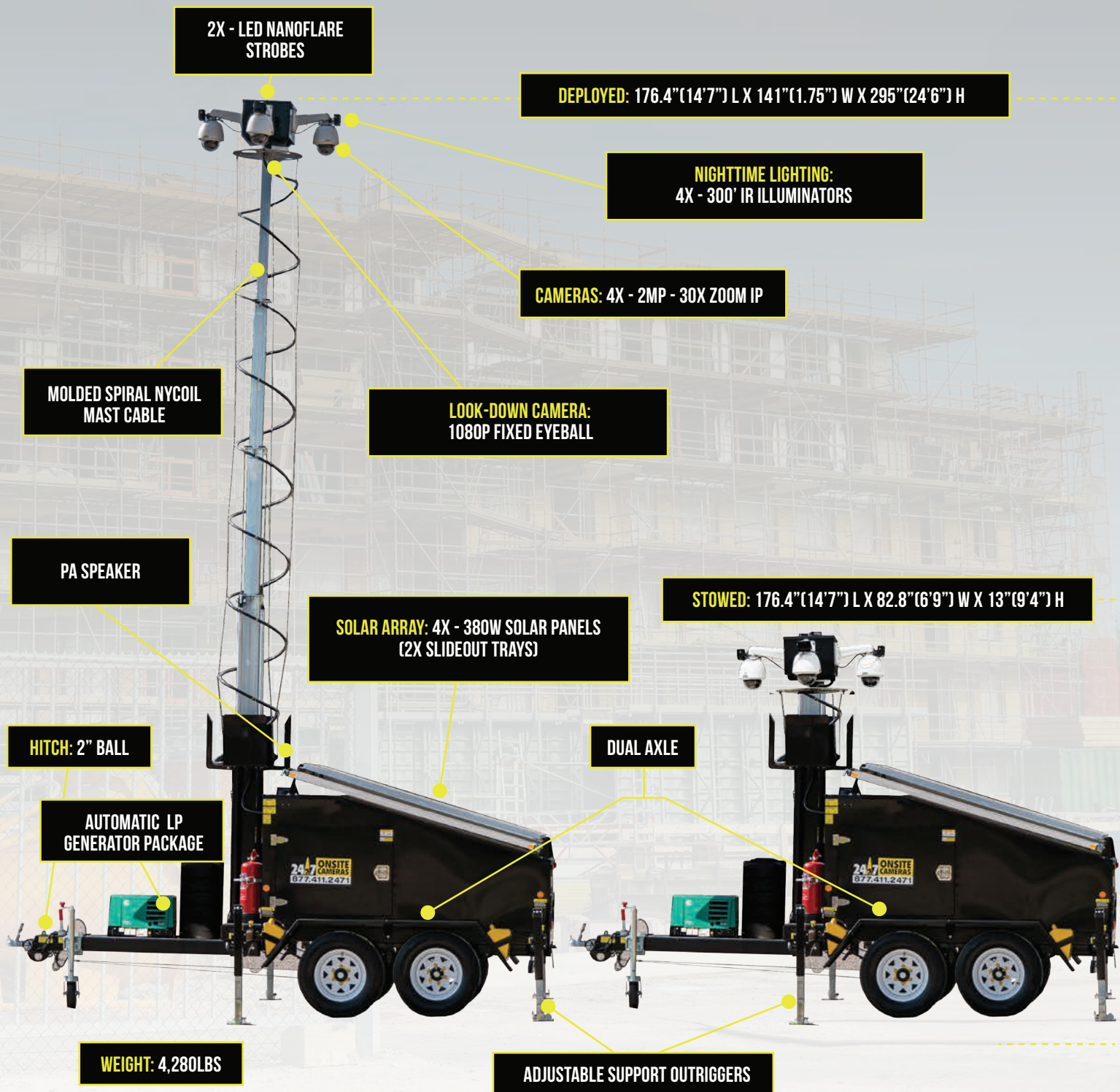
AI SERVICES: Robust vehicle and person detection

VOLTAGE REGULATOR: Victron energy isolated AC/DC converter

BACKUP CHARGER: Built in 120V AC

S-SERIES

KEEP YOUR JOBSITE SECURE
WITH THE MOST ADVANCED OPTICS IN THE INDUSTRY.



S-SERIES

EASY DEPLOYMENT FOR 24/7 USAGE

ADVANCED ANALYTICS AND THE HIGHEST QUALITY HIGH MEGA PIXEL CAMERAS.

